

BAI EMBROIDERY
MACHINE

SPARE PARTS BOOK

零件书

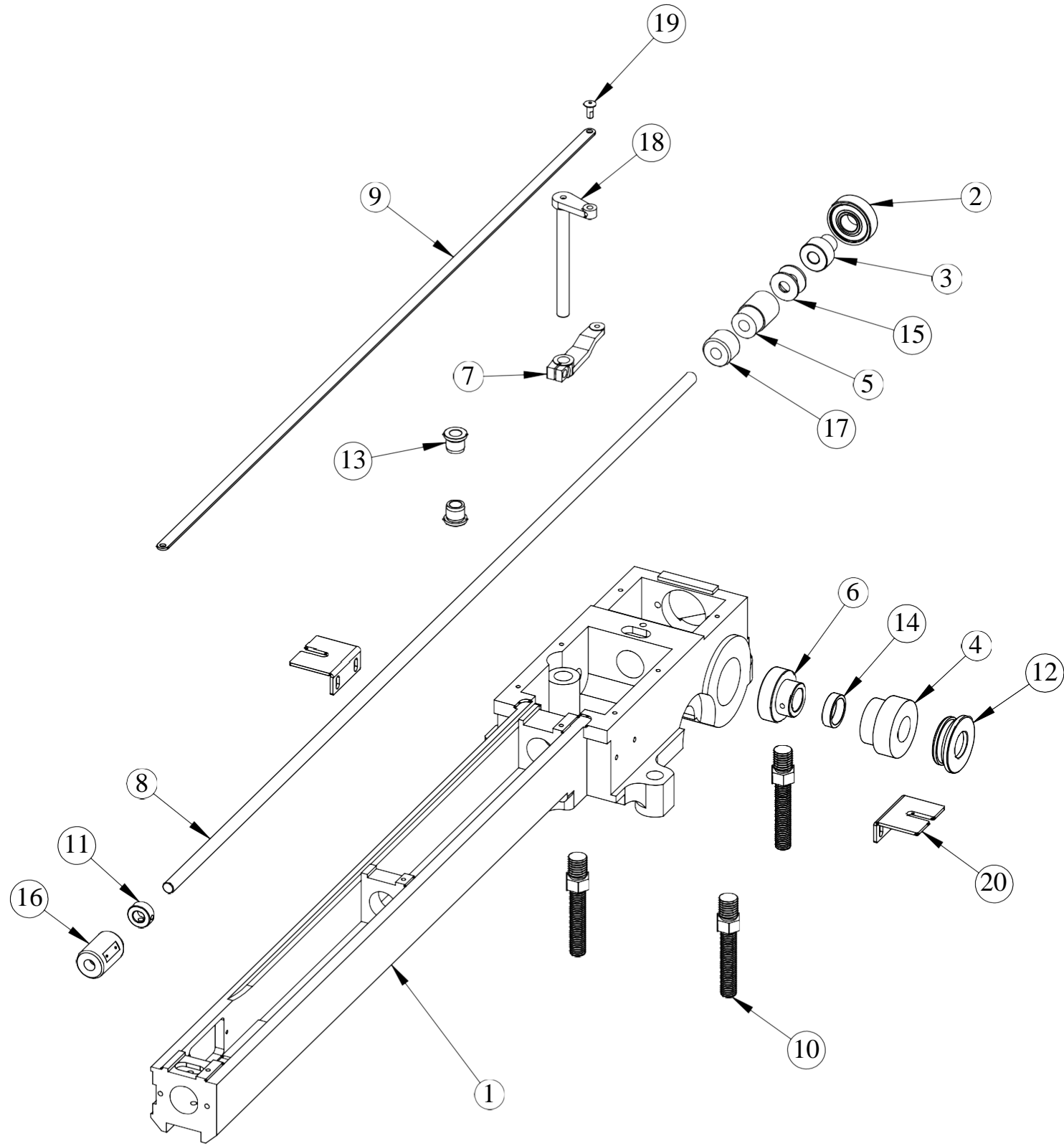
(Vision-Series)

C O N T E N T S

目 录

- | | | | |
|-----|---|----|-------------------------------|
| 1 | Rotary Hook Base
梭床 | 9 | Machine Cover
机器罩盖 |
| 2 | Trimming Parts
底线剪线部分 | 10 | Color Change Parts
换色 |
| 3 | XY Drive System
XY 导轨驱动系统 | 11 | Trimming Drive System
剪线驱动 |
| 4 | X Axis Guide Rail
X 向导轨 | 12 | Tension
夹线器 |
| 5 | Y Axis Guide Rail
Y 向导轨 | 13 | Stand
底架 |
| 6-1 | Head Guide Rail Jump Solenoid
机头导轨 机头电磁铁 | 14 | Embroidery Frame
花架 |
| 6-2 | Slide Block Take Up Lever A/B
针杆驱动块 挑线杆 AB | 15 | Cap Frame Parts
帽框组件 |
| 6-3 | Needle Bar Driving Cam Set
大连杆组件 | 16 | Cap Stand Frame
帽架 |
| 6-4 | Presser Foot Cam Block
压脚凸轮 压脚驱动块 | | |
| 6-5 | Jump Motor
电机跳跃 | | |
| 7-1 | Needle bar Take Up Lever
针杆 挑线杆 | | |
| 7-2 | Head Cover Thread Lock
面盖 下过线 | | |
| 8 | Gear Box
齿轮箱 | | |

1 Rotary Hook Base 梭床

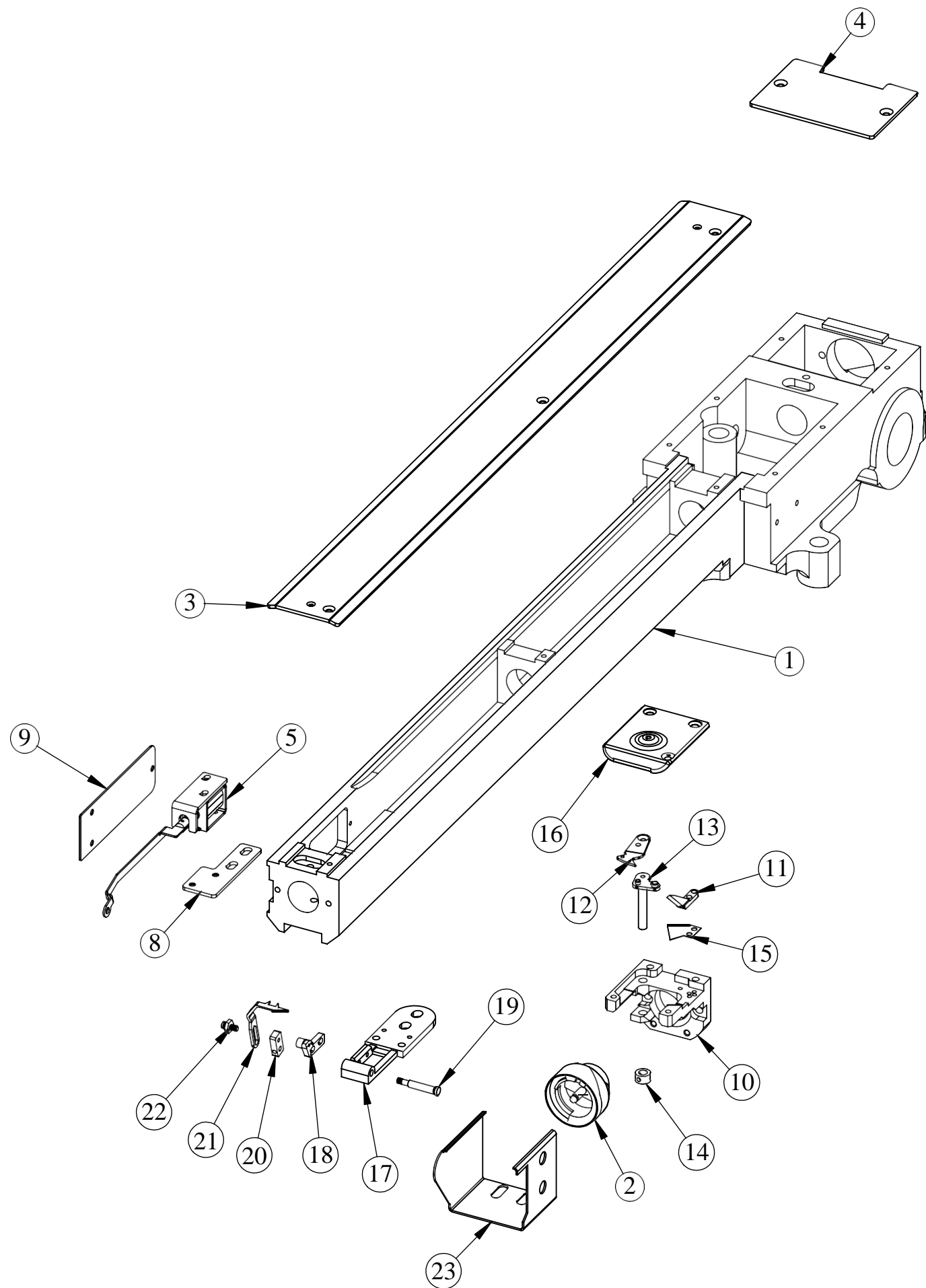


1 Rotary Hook Base 梭床



No.	Chinese Description	Description	Part No.	Qty
1	成衣绣涡齿梭床 - Y500	Rotary Hook Base	0108030027	1
2	轴承6201	Bearing	0202010026	1
3	轴承套d794D12L22	Bearing Collar	0105030017	1
4	大蜗齿轮	Big Gear	0108030004	1
5	小蜗齿轮	Small Gear	0108030005	1
6	带轴承套轴承6003	Bearing 6003	0202010006	1
7	d8开口剪线连杆	Drive Arm	0103030013	1
8	旋梭轴 双头Y500用	Rotary Hook Shaft	0108030028	1
9	剪线长连接板双头Y500用	Knife Connecting Plate	0108030029	1
10	底板调节螺丝 - 2	Adjust Screw	0108030031	3
11	两眼挡圈	Collar	0102030013	1
12	梭床封油挡圈 - 加工	Bushing	0108030017	1
13	铜套D12-d8	Oiled Bearing	0103030012	2
14	蜗齿侧垫圈	Collar	0108030032	1
15	旋梭轴垫圈	Collar	0201200001	2
16	旋梭轴套	Bushing	0102030008	1
17	旋梭轴套	Bushing	0108030033	1
18	剪线驱动臂	Thread Trimming Lever	0305070001	1
19	剪线拉杆销	Pin	0106040013	1
20	Y500梭床侧面台板支架	Table Support	0109140004	2

2 Trimming Parts 底线剪线

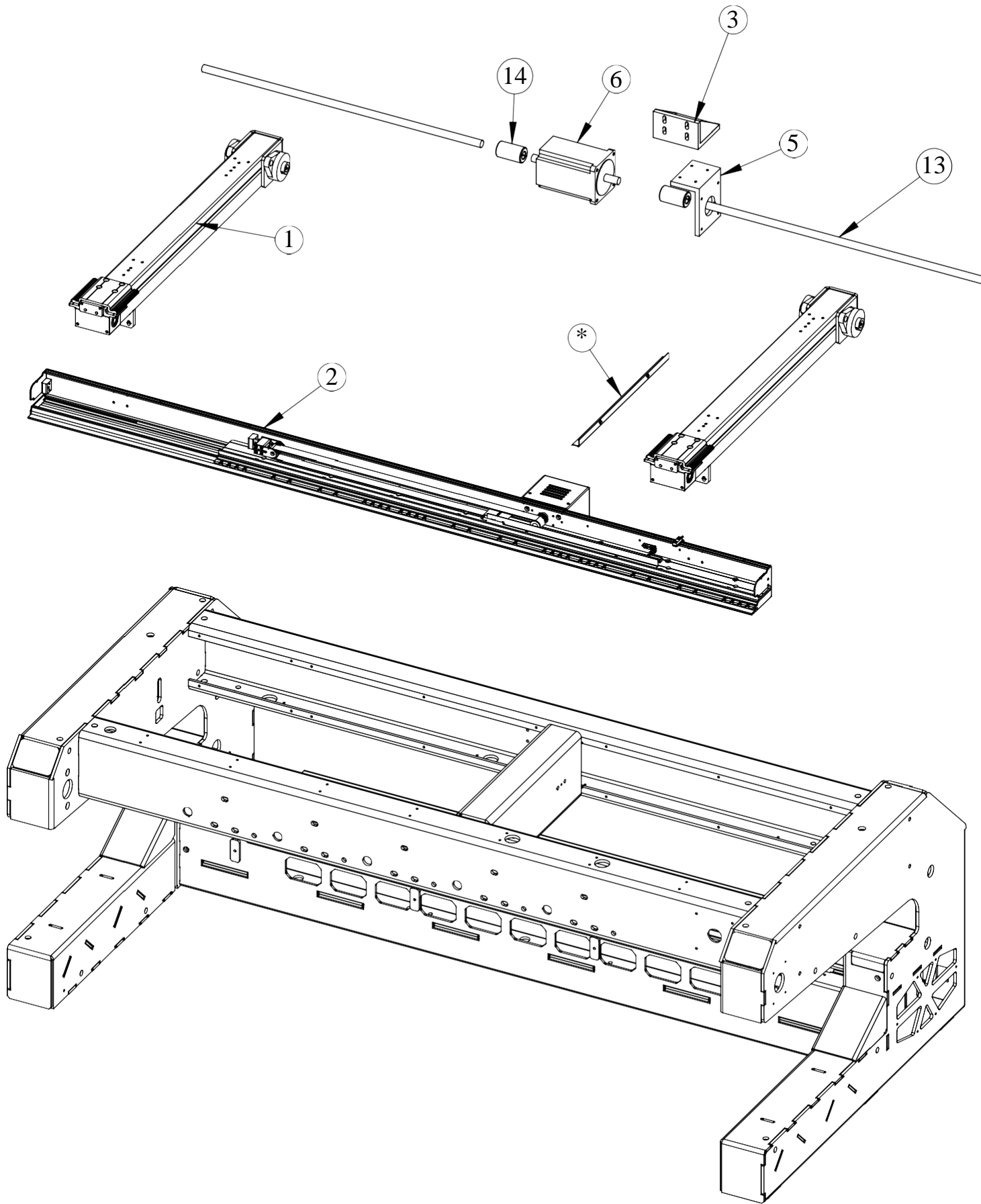


2 Trimming Parts 底线剪线

BAI EMBROIDERY MACHINE

No.	Chinese Description	Description	Part No.	Qty
1	成衣绣涡齿梭床 - Y500	Rotary Hook Base	0108030027	1
2	旋梭	Hook		1
3	双头Y500梭床中盖板	Mid Cover	0108030030	1
4	双头Y400梭床齿轮盖板	Back Cover	0108030007	1
5	扣线电磁阀	Picker Solenoid	0206120002	1
8	扣线电磁铁底垫	Installation Plate	0103030020	1
9	梭箱左侧盖板	Left Cover	0103030026	1
10	针板支撑架-多帽机	Needle Plate Base	0103030006	1
11	定刀	Fixed Knife	0103030018	1
12	动刀	Movable Knife	0103030017	1
13	动刀驱动轴	Movable Knife Drive Arm	0103030015	1
14	动刀轴套	Collar	0103030016	1
15	压片	Under Thread Presser	0103030019	1
16	多头帽绣针板(帽框用)	Needle Plate (protruding)	0103030010	1
17	扣线器底板	Picker Bracket	0103030022	1
18	扣线器限位块	Picker Stopper	0103030023	1
19	扣线器连接销			1
20	扣线器座	Picker Base	0103030020	1
21	分线叉	Picker	0103030021	1
22	台阶螺丝			1
23	旋梭罩	Hook Cover	0103030024	1

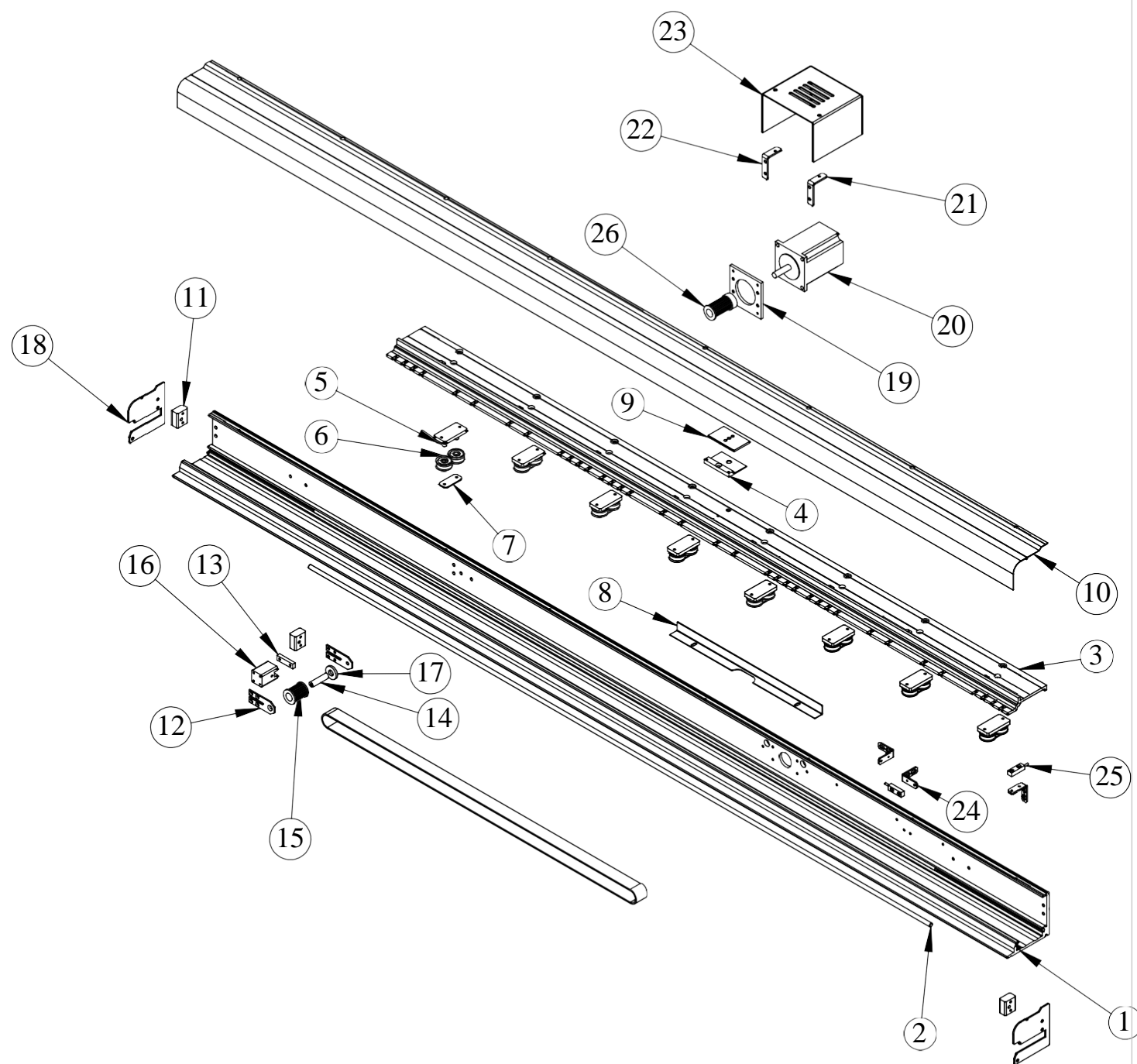
3 XY Drive System XY导轨驱动



3 XY Drive System XY导轨驱动

No.	Chinese Description	Description	Part No.	Qty
1	铁制导轨装配体Y450-轻帽Y500用	Y DRIVE SET		2
2	三头X400框架装配体	X DRIVE SET		1
3	Y86步进电机装配体			1
4	轻帽机86Y电机座角尺	MOTOR BASE BRACKET	0109180001	1
5	轻帽机86Y电机座	MOTOR BASE	0109180002	1
6	86H2P130步进电机	STEP MOTOR	0206018025	1
10	步进电机57H2P112-2006BZ08	STEP MOTOR	0206015011	1
13	Y驱动轴d15-3T轻帽机	Y SHAFT		2
14	联轴器d15	SHAFT CUSHING	0102030016	2

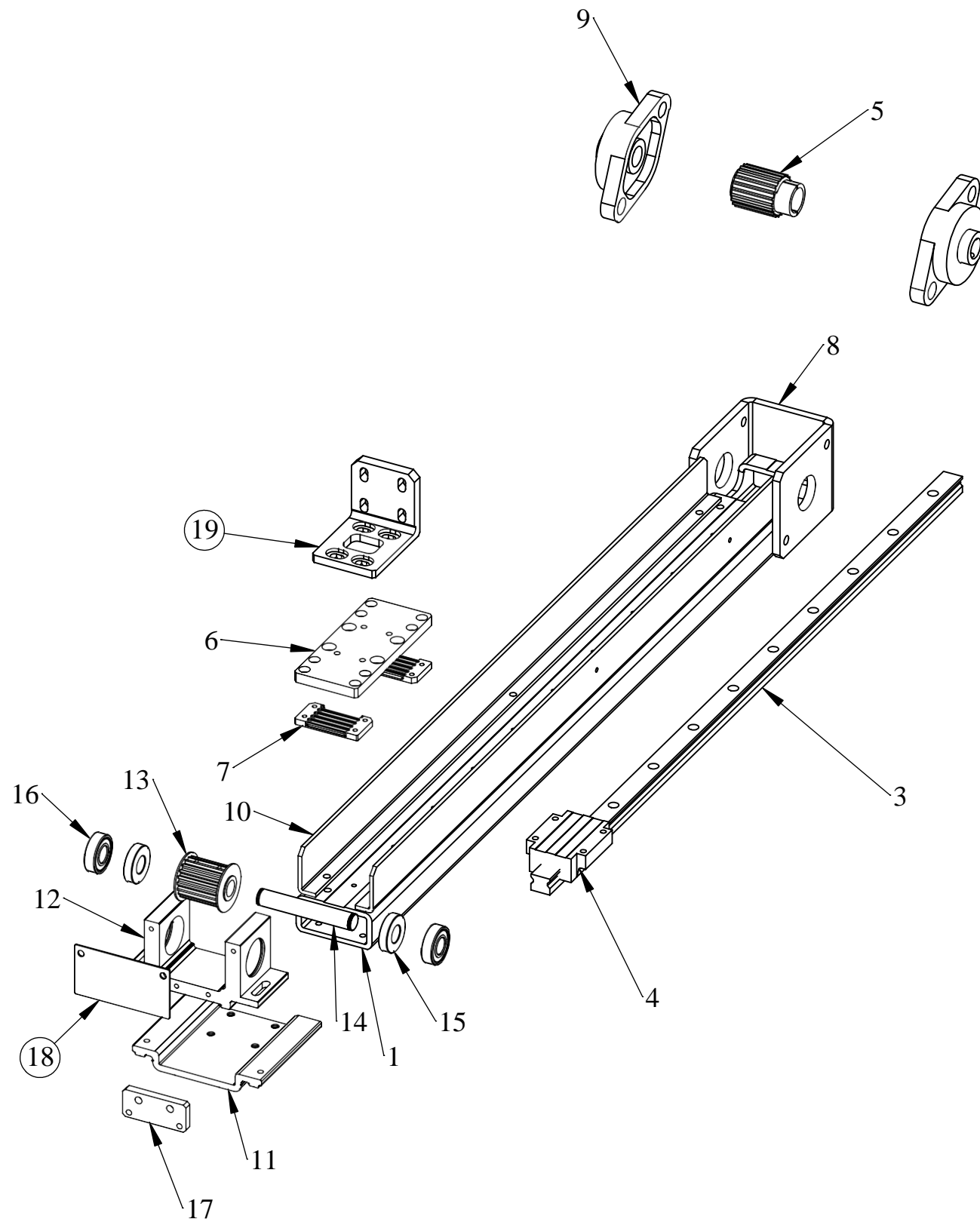
4 X-Axis Guide Rail X向导轨



4 X-Axis Guide Rail X向导轨

No.	Chinese Description	Description	Part No.	Qty
1	三头驱动横档底板 (加宽) X400	X FRAME	109190001	1
2	硬质轴D6	SHAFT		2
3	马头驱动横档动板 (加宽) X450	X DRIVE CONNECTING PLATE	109190002	1
4	齿压板底板 - 加宽	PRESS BLOCK DOWN	108200002	1
5	双轴承座方块	BEATING BLOCK BASE	108200001	8
6	U型槽轴承SG66	U BEARING SG66	202010013	16
7	2轴承衬板	BEARING PLATE	108200003	8
8	接近感应角条	LIMIT BUFFER	0109170002	1
9	齿压板	PRESS BLOCK UP		1
10	横框盖子	COVER	109190003	1
11	X被动轮调节座	SIDE COVER SUPPORT	108200004	3
12	X被动轮侧板	TIMING PULLEY BRACKER PLATE	108200005	2
13	X被动轮调节滑块		108200006	1
14	X被动轮轴	TIMING PULLEY SHAFT	108200007	1
15	X被动轮S3M20TW23	TIMING PULLEY	0108200008	1
16	X被动轮侧板座	TIMING PULLEY BRACKET BLOCK	108200009	1
17	轮加高垫圈	WASHER		1
18	侧盖板	SIDE COVER	0108200011	2
19	电机板	MOTOR PLATE		1
20	57H3P076-5806AZ08 步进电机 马头X框架用	STEP MOTOR	0206015002	1
21	X电机罩 (塑料罩) 支架 - 左	MOTOR COVER BRACKET-L	0105150010	1
22	X电机罩 (塑料罩) 支架 - 右	MOTOR COVER BRACKET-R	0105150011	1
23	马头X电机罩 - 加长10	MOTOR COVER	0105150001	1
24	接近感应器座	LIMIT INSTALLATION SUPPORT	0109170003	3
25	接近感应器 SP08-D3NA	LIMIT SENSOR	0105070001	2
26	X主动轮S3M20TW30	TIMING PULLEY		1

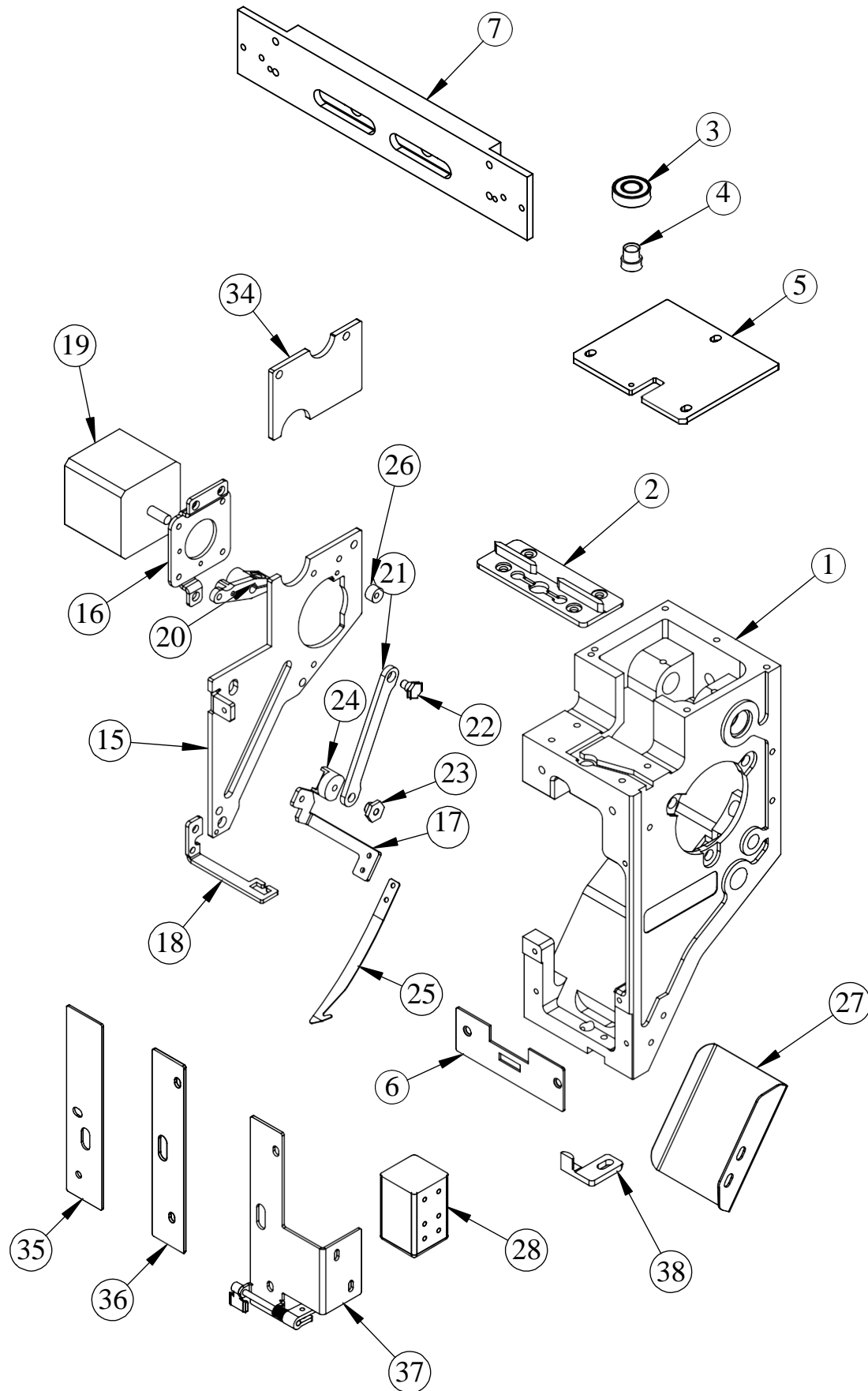
5 Y-AXIS DRIVE SYSTEM Y向导轨



5 Y-AXIS DRIVE SYSTEM Y向导轨

No.	Chinese Description	Description	Part No.	Qty
1	铁制导轨座Y450	Y DRIVE BASE Y450	0103150001	1
2	铁制导轨座 Y450 中间	Y DRIVE BASE Y450 MID	0103150002	1
3	直线条Y450	LINER WAY H15	0203040001	1
4	直线滑块			2
5	主动带轮5M W32-Φ15	TIMING PULLEY 5M W32-Φ15	0103170001	1
6	帽机Y导轨压板	Y-AXIS FEED PLATE	0103170002	1
7	独立齿板 30带宽	BELT PLATE	0103170003	2
8	主动轮轴承安装折弯			1
9	万向轴承 UCFL202	UC BEARING 202	0202110001	2
10	铁导轨侧围板Y450			2
11	导轨被动轮支架底座	HOLDER BASE:TENSION PULLEY	0103170007	1
12	导轨被动轮支架	HOLDER:TENSION PULLEY	0103170008	1
13	被动轮W30	PULLEY W30 d12	0103170009	1
14	被动轮轴	PULLEY SHAFT D12	0103170010	1
15	被动轮侧挡圈	COLLAR d12	0103170012	2
16	轴承6001 D28d12H8	BEARING 6001	0202010001	2
17	调节板	SDJUST PLATE	0103170011	1
18	被动轮支架端盖	COVER	103170014	1
19	轻帽驱动联接角铁	ANGLE JOINT PLATE	0109170001	1

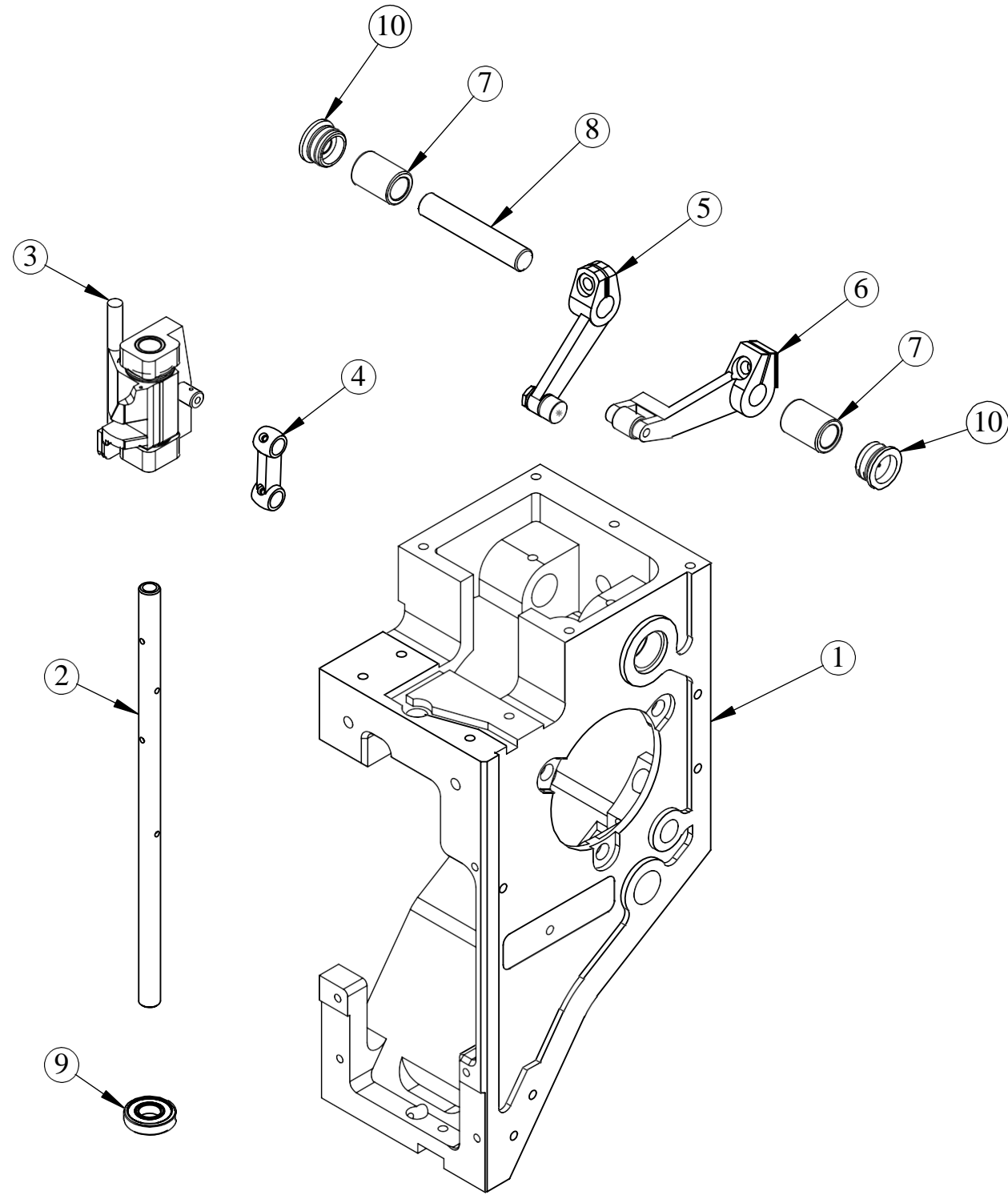
6-1 Arm 1 机头1



6-1 Arm 1 机头1

No.	Chinese Description	Description	Part No.	Qty
1	机头箱基座	HEAD	0102010001	1
2	挑线铝导条	TAKE-UP LEVER GUIDERAIL	0102010007	1
3	轴承R-1980KK	Bearing	0202010007	1
4	自扣轴承销	Roller Pin	0102010003	1
5	机头箱顶盖	HEAD UP COVER	0102010002	1
6	针杆箱下导板	GUIDE PLATENEEDLE BAR CASE	0102010005	1
7	机头直线导轨9针 不带夹板耳	SLIDE RAIL 9N(SINGLE)	0203030004	
7	机头直线导轨 9针	SLIDE RAIL 9N	0203030001	1
8	机头直线导轨6针 不带夹板耳	SLIDE RAIL 6N(SINGLE)	0203030009	
8	机头直线导轨6针	SLIDE RAIL 6N	0203030002	
9	机头直线导轨12针不带夹板耳	SLIDE RAIL 12N(SINGLE)	0203030003	
9	机头直线导轨 12针	SLIDE RAIL 12N	0203030007	
10	机头直线导轨15针不带夹板耳	SLIDE RAIL 15N(SINGLE)	0203030008	
10	机头直线导轨 15针	SLIDE RAIL 15N	0203030005	
15	机头箱下侧盖	SIDE COVER :HEAD LOWER	0102010009	1
16	勾线电机座	BASE: HOOK MOTOR	0102040001	1
17	电机勾线勾刀连杆	HOOK SUPPORT	0102040002	1
18	电机勾线勾刀导向板	GUIDE:HOOK	0102040003	1
19	42电机	42 STEP MOTOR	0206014005	1
20	电机勾线驱动连杆	DRIVE LEVER:HOOK	0102040004	1
21	电机勾线中间连杆	CONNECTING PLATE : HOOK	0102040005	1
22	连杆轴螺丝	STEPPED SCREW	0102040006	1
23	连杆轴圈	SPACER: SLIDE HOOK	0102040007	1
24	尼龙滑块	SLIDE : HOOK	0102040008	1
25	弧形勾刀	HOOK	0102040009	1
26	橡胶缓冲套	DAMPER RING	0102090013	1
27	勾线器后挡板	BACK SIDE COVER	0102040012	1
28	压线电磁铁-自保持式	SOLENOID	0206150002	1
35	机头箱前盖L	HEAD FRONT COVER	0102050001	1
36	机头箱前盖R	HEAD FRONT R	0102010004	1
37	面线夹驱动组件 (右置大)	OPEN FRAME DRIVEN SET	0302050011	1
38	针杆箱定位勾	GUIDE BRACKET NEEDRAIL BAR CASE	0102010006	1
39	M3止退螺母			1

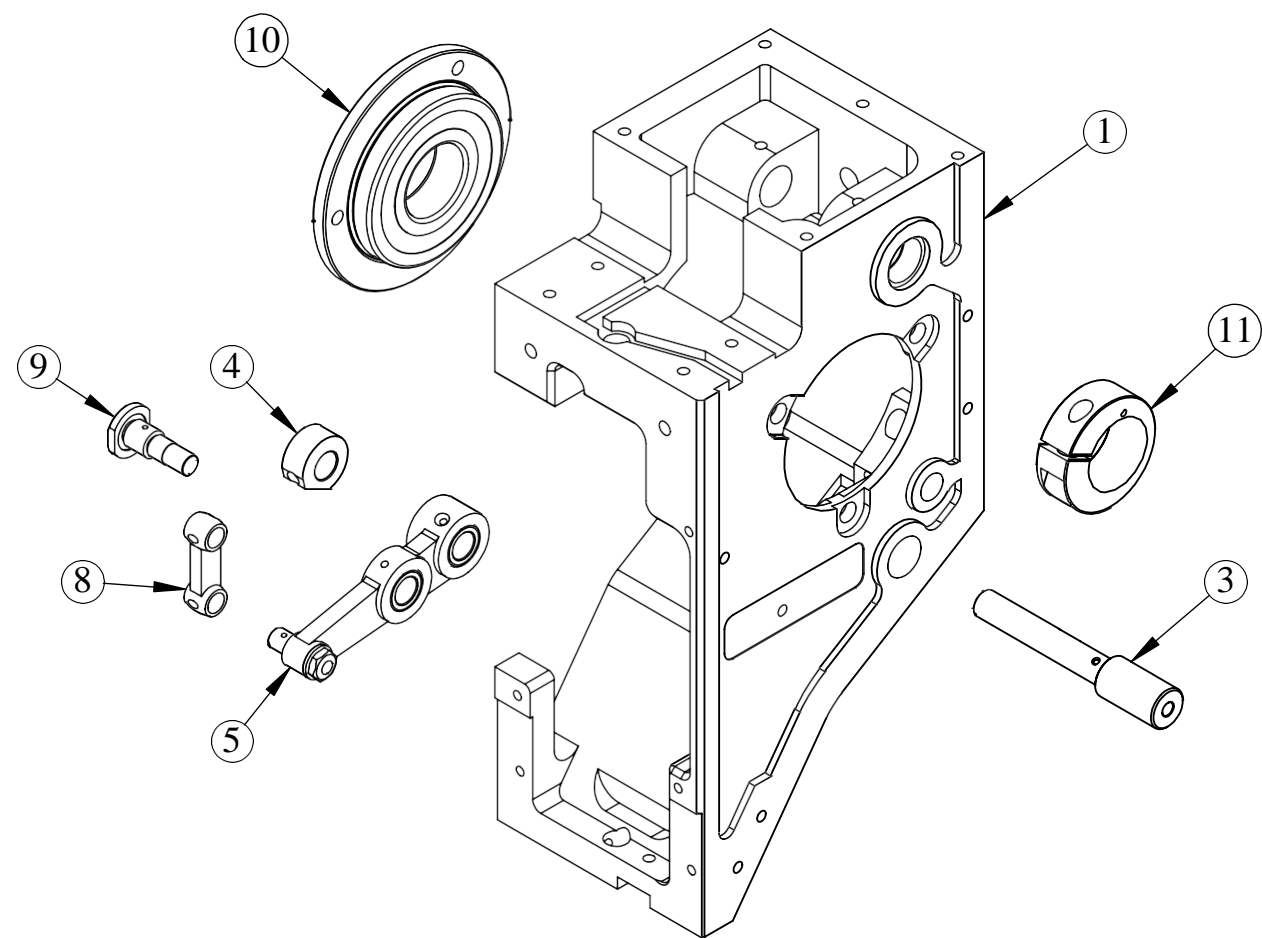
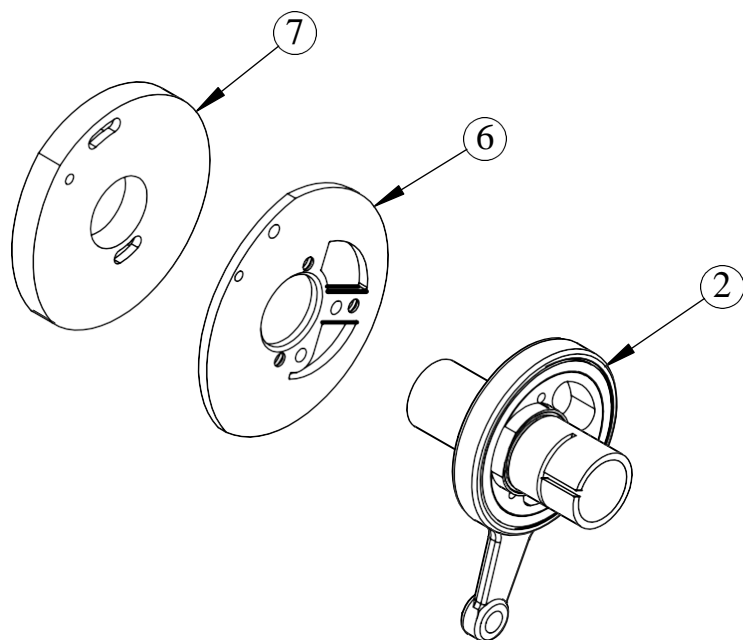
6-2 Arm 2 机头2



6-2 Arm 2 机头2

No.	Chinese Description	Description	Part No.	Qty
1	机头箱基座	HEAD	0102010001	1
2	针杆驱动轴	NEEDLE BAR DRIVE SHAFT	0102010014	1
3	针杆驱动块(电机跳跃用)	NEEDLE BAR RECIPROCATOR SET	0302010005	1
4	针杆驱动连杆(小连杆)	CONNECTING ROD	0102010035	1
5	挑线杆A装配体	TAKE UP LEVER A SET	0302010003	1
6	挑线杆B装配体	TAKE UP LEVER B SET	0302010004	1
7	连杆轴衬套	BEARING CASE BUSHING	0102010023	2
8	挑线杆轴	STRAIGHT PIN	0102010018	1
9	轴承D17d7点24	BEARING	0202010004	1
10	挑线轴塑料堵头	COVER	0102010022	2

6-3 Arm 3 机头3

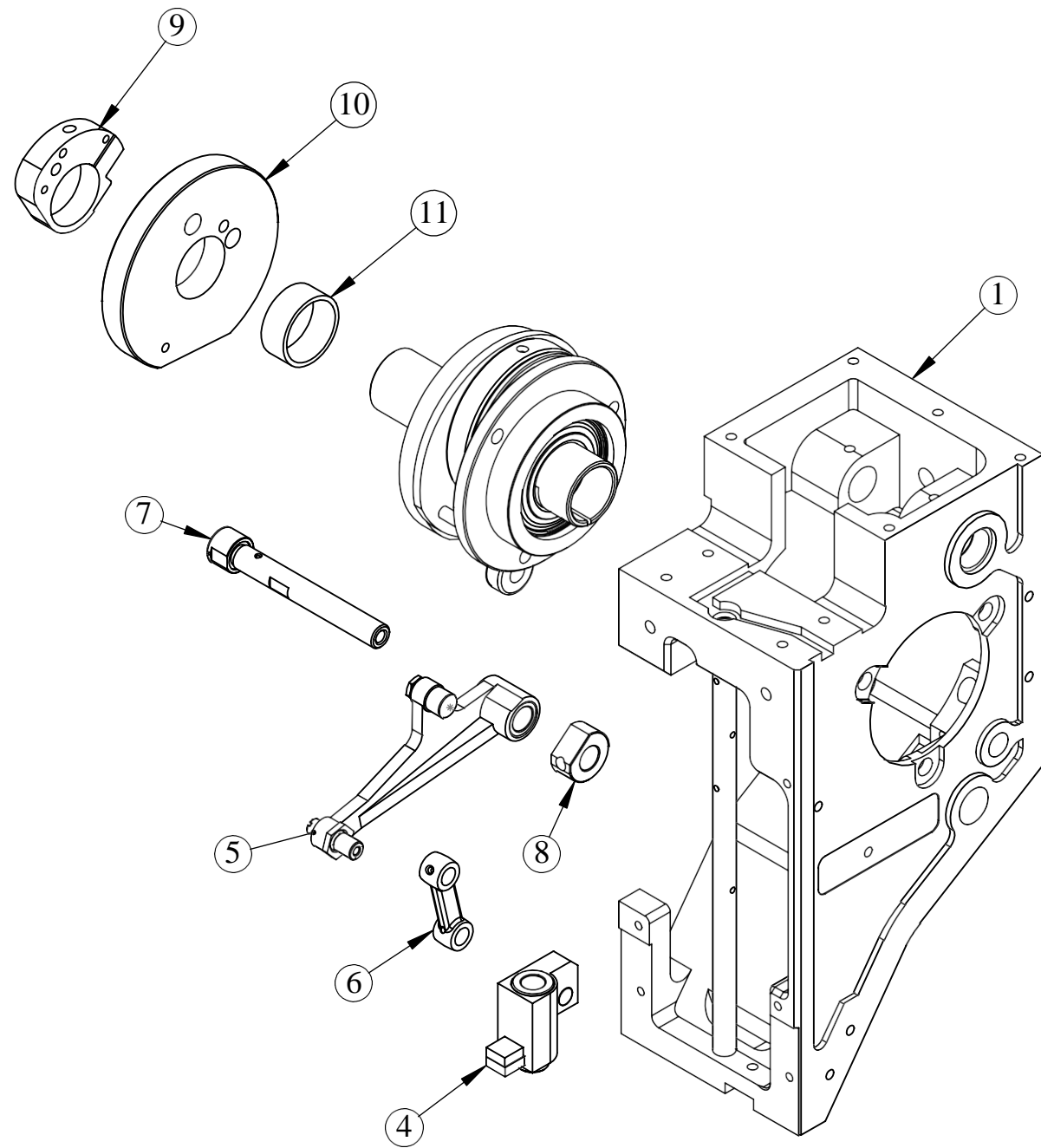


6-3

Arm 3 机头3

No.	Chinese Description	Description	Part No.	Qty
1	机头箱基座	HEAD	0102010001	1
2	BOM凸轮三件套18轴长	BOM CAM SET	0302010002	1
3	针杆驱动销	STEPPED PIN	0102010030	1
4	定位挡圈M5	STOPPER COLLAR	0102010032	1
5	三眼连杆装配体	LEVERNEEDLE BAR SET	0102010031	1
6	凸轮盖板 (配BOM)	CAM BASE	0102010027	1
7	挑线凸轮	CAM:TAKE-UP LEVER	0102010028	1
8	针杆驱动连杆(小连杆)	CONNECTING ROD	0102010035	1
9	分段销 (1号销)	STEPPED SCREW	0102010033	1
10	BOM凸轮轴承座	BEARING CASE SET	0302010001	1
11	偏心套环	TIGHTENING COLLAR	0102010024	1

6-4 Arm 4 机头4

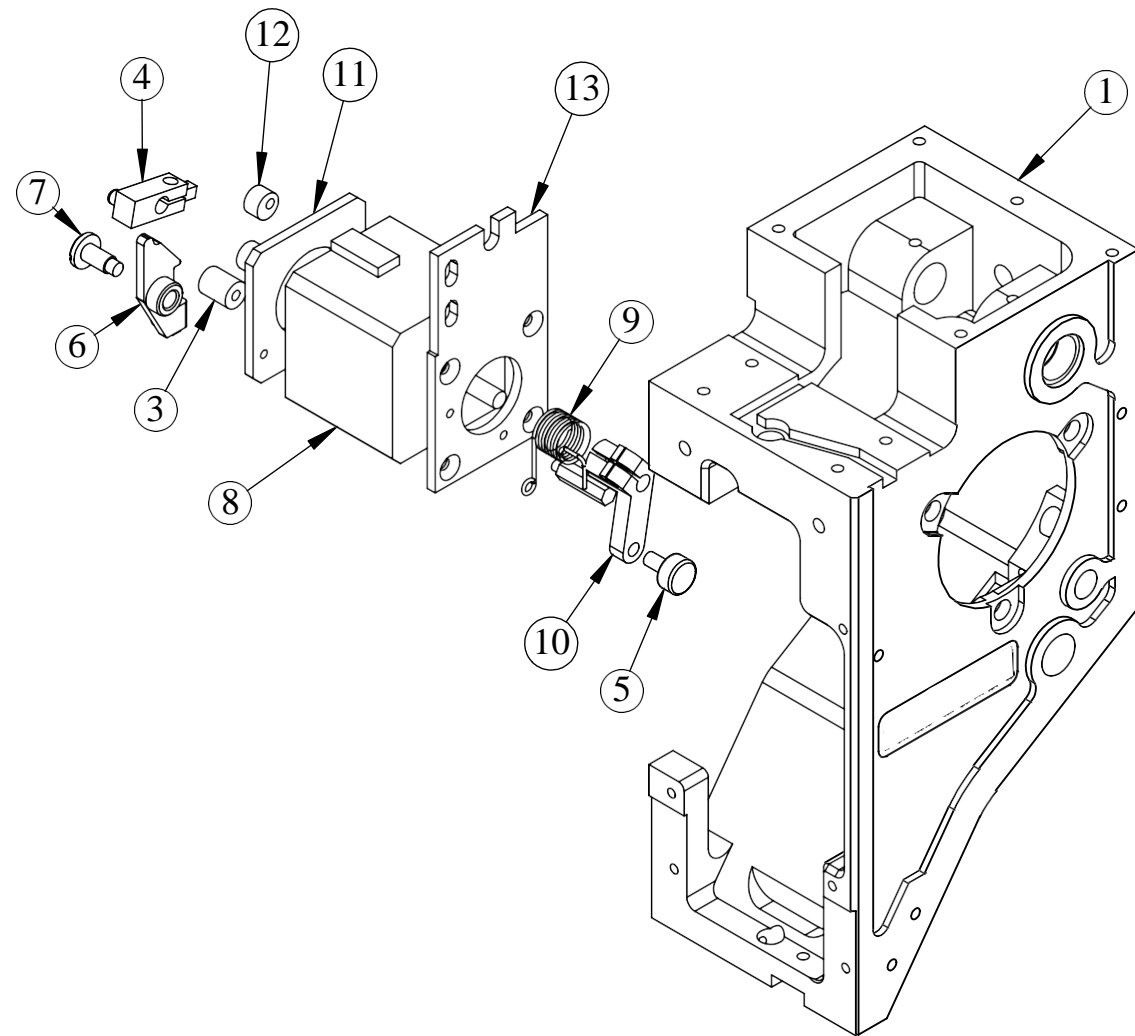


6-4 Arm 4 机头4

BAI EMBROIDERY MACHINE

No.	Chinese Description	Description	Part No.	Qty
1	机头箱基座	HEAD	0102010001	1
3	针杆驱动轴	NEEDLE BAR DRIVE SHAFT	0102010014	1
4	压脚驱动块组件	PRESSER FOOT DRIVER SLIDE BOLCK	0302010007	1
5	压脚凸轮驱动连杆装配体	PRESSER FOOT DRIVEING CONNECTING ROD	0302010006	1
6	压脚驱动连杆	CONNECTING ROD	0102010044	1
7	压脚连杆定位轴	PRESSER FOOT FIXING PIN	0102010043	1
8	定位挡圈M5	STOPPER COLLAR	0102010032	1
9	压脚凸轮固定座	BASE:CAM	0102010040	1
10	压脚凸轮	CAM	0102010041	1
11	凸轮隔圈 H9.5	COLLAR	0102010042	1

6-5 Jump Motor 跳跃电机

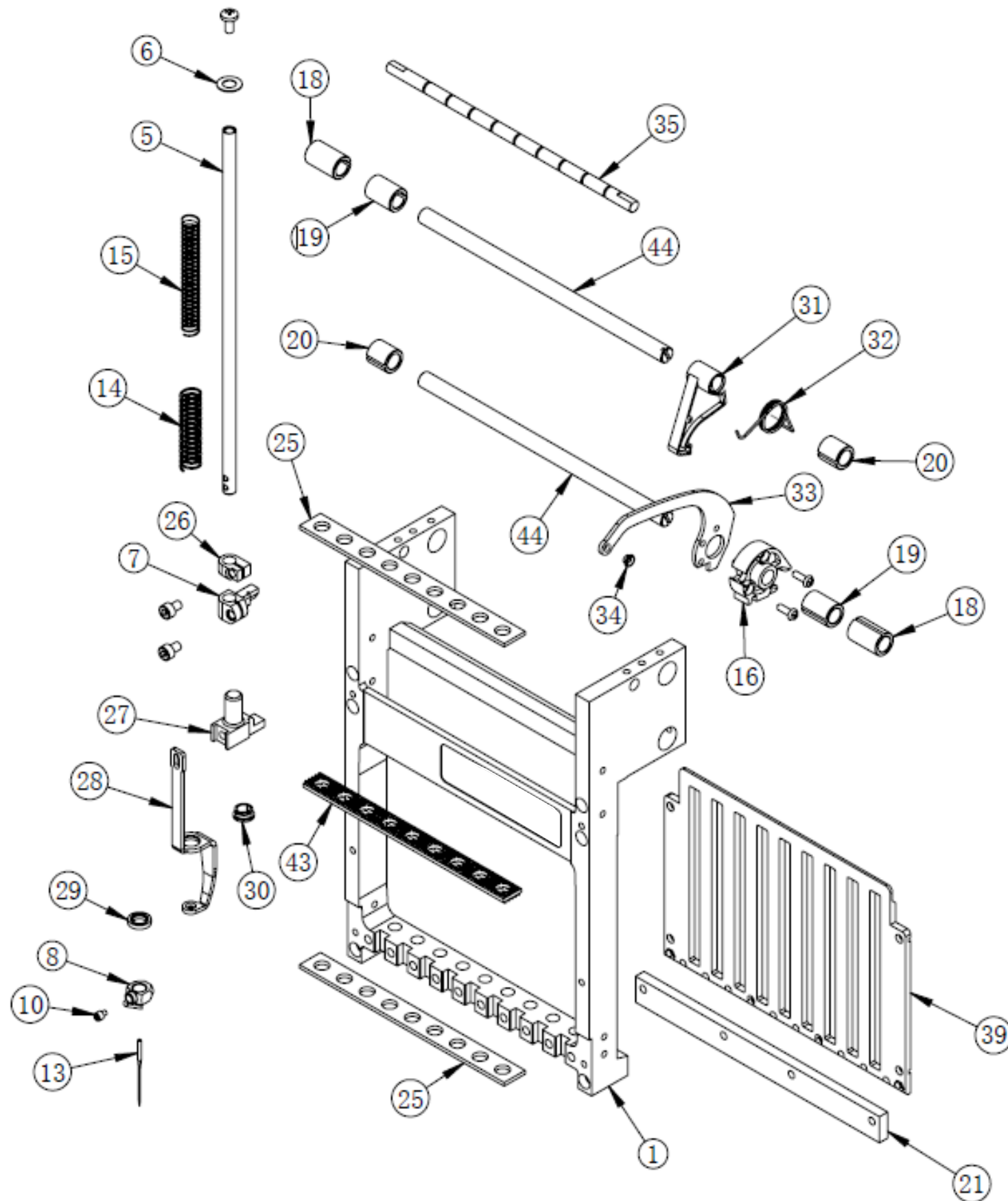


6-5 Jump Motor 跳跃电机



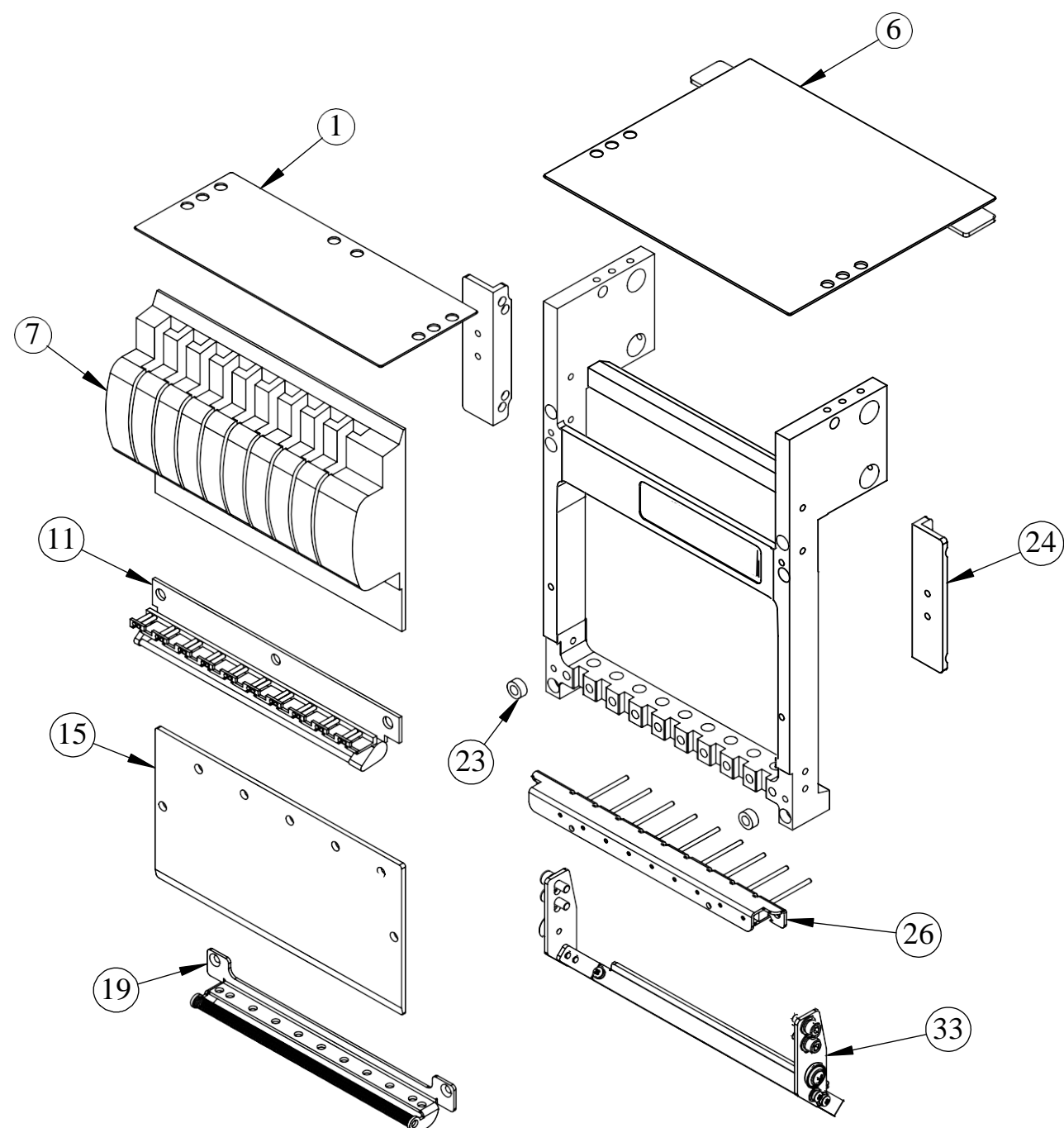
No.	Chinese Description	Description	Part No.	Qty
1	机头箱基座	HEAD	102010001	1
3	止动销	STOP PIN	102090005	1
4	控制柄	LEVER FOR JUMP MOTOR	102090006	1
5	驱动连杆轴承	JUMP BEATING	102090007	1
6	手动柄	CLUTCH LEVER	102090008	1
7	手动销	STEPPED SCREW	102090009	1
8	跳跃电机42H40-1206B05-2211			1
9	跳跃回位弹簧	TORSION SPRING	102090010	1
10	跳跃驱动连杆	LEVER JUMP	102090011	1
11	限位安装侧板	REAR BOARD	102090012	1
12	橡胶缓冲套	DAMPER RING	102090013	2
13	D跳跃电机安装板	JUMP MOTOR BRACKER	102090004	1
14	跳跃电机安装板 - 现货	JUMP MOTOR BRACKER	102090004	1

7-1 针架1 Needle Bar Case 1



No.	Chinese Description	Description	Part No.	Qty
1	针杆架 9针	NEEDLE BAR CASE 9N	0102020001	1
2	针杆架 6针	NEEDLE BAR CASE 6N	0102020002	
3	针杆架 12针	NEEDLE BAR CASE 12N	0102020003	
4	针杆架 15针	NEEDLE BAR CASE 15N	0102020039	
5	针杆6.35*212	NEEDLE BAR	0102020004	1
6	上弹簧垫片	WSAHER		1
7	针杆连接销	NEEDLE BAR CONNECTING STU	0102020009	1
8	针夹 (连螺钉)	NEEDLE CLAMP	0102020016	1
10	针夹螺钉	SCREW		1
13	针	NEEDLE		1
14	针杆下弹簧	COMPRESSION SPRING	0102020011	1
15	针杆上弹簧	Needle Bar Upper Spring	0102020005	1
16	挑线齿轮	BOSS	0102020021	1
18	针架开口轴衬L19	SPLIT COLLAR	0102020022	2
19	针架开口轴衬L16点5	SPLIT COLLAR	0102020022	2
20	针架开口轴衬L12点5	SPLIT COLLAR	0102020017	2
21	针杆架下导轨条 9N	Needle Bar Lower Guide Rail	0102020026	1
22	针杆架下导轨条 6N	Needle Bar Lower Guide Rail 6N	0102020027	
23	针杆架下导轨条 12N	Needle Bar Lower Guide Rail 12N	0102020028	
24	针杆架下导轨条 15N	Needle Bar Lower Guide Rail 15N	0102020042	
25	下毛毡垫 9N	FELT PACKING	0102020015	2
26	上死点固定块件	STOPPER UPPER POINT	0102020008	1
27	压脚调节套	Presser Foot Set Clamp	0102020013	1
28	压脚 56	PRESSER FOOT	0102020014	1
29	O形橡胶圈	NEEDLE BAR WASHER	0102020057	1
30	压脚开口轴衬	Presser Foot Bushing	0102020012	1
31	自扣	LEVER STOPPER	0102020032	1
32	自扣弹簧	TORSION SPRING	0102020033	1
33	挑线杆片	TAKE-UP LEVER	0102020019	1
34	瓷眼	THREAD GUIDE COLLAR	0102020020	1
35	弹簧挡杆 9N	SPRING HOOK BAR	0102020029	1
36	弹簧挡杆 6N	SPRING HOOK BAR 6N	0102020036	
37	弹簧挡杆 12N	SPRING HOOK BAR 12N	0102020037	
38	弹簧挡杆 15N	SPRING HOOK BAR 15N	0102020038	
39	针杆导板 9针	NEEDLE BAR GUIDE 9N	0102020023	1
40	针杆导板 6针	NEEDLE BAR GUIDE 6N	0102020024	
41	针杆导板 12针	NEEDLE BAR GUIDE 12N	0102020025	
42	针杆导板 15针	NEEDLE BAR GUIDE 15N	0102020041	
43	麻垫	DAMPER RING	0102020007	1
44	挑线杆导向轴 9N	GUIDE SHAFT	0102020018	2
45	挑线杆导向轴 6N	GUIDE SHAFT 6N	0102020034	
46	挑线杆导向轴 12N	GUIDE SHAFT 12N	0102020035	
47	挑线杆导向轴 15N	GUIDE SHAFT 15N	0102020040	

7-2 Needle Bar Case 2 针架2

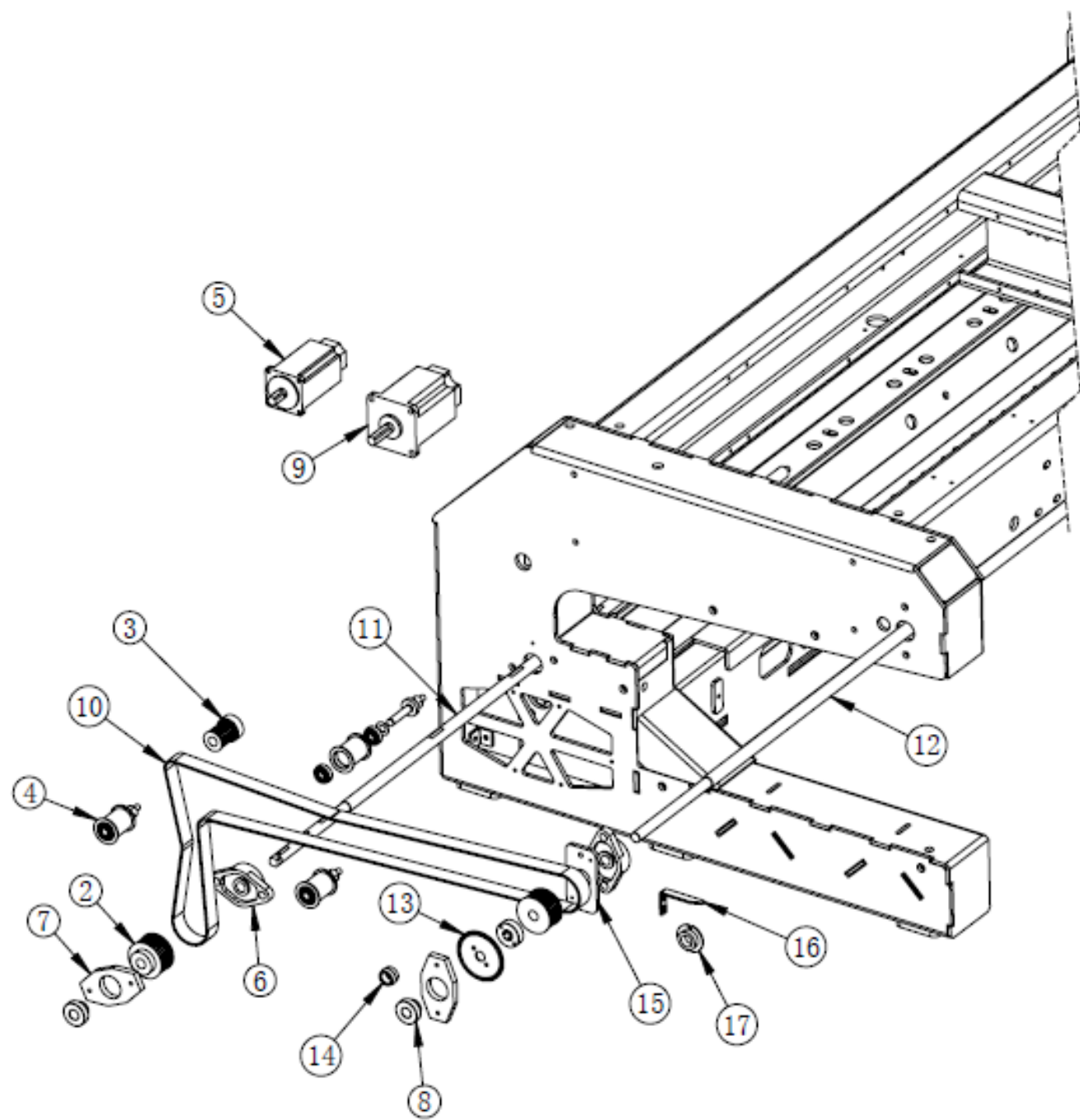


7-2 Needle Bar Case 2 针架2

BAI EMBROIDERY MACHINE

No.	Chinese Description	Description	Part No.	Qty
1	针架上隔板 9N	TOP COVER 9N	0102020053	1
2	针架上隔板 6N	TOP COVER 6N	0102020054	
4	针架上隔板 12N	TOP COVER 12N	0102020055	
5	针架上隔板 15N	TOP COVER 15N	0102020056	
6	针架上隔板W140	TOP COVER	0102020063	1
7	针架上面板 9N	TAKE-UP LEVER COVER 9N	0102020044	1
8	针架上面板 6N	TAKE-UP LEVER COVER 6N	0102020045	
9	针架上面板 12N	TAKE-UP LEVER COVER 12N	0102020046	
10	针架上面板 15N	TAKE-UP LEVER COVER 15N	0102020047	
11	中过线组件 9N带簧式	MIDDLE THREAD GUIDE 9N	0302020001	1
12	中过线组件 6N带簧式	MIDDLE THREAD GUIDE 6N	0302020002	
13	中过线组件 12N带簧式	MIDDLE THREAD GUIDE 12N	0302020003	
14	中过线组件 15N带簧式	MIDDLE THREAD GUIDE 15N	0302020004	
15	针架下面板 9N	UNDER COVER 9N	0102020048	1
16	针架下面板 6N	UNDER COVER 6N	0102020049	
17	针架下面板 12N	UNDER COVER 12N	0102020050	
18	针架下面板 15N	UNDER COVER 15N	0102020051	
19	针架下过线 9针	THREAD LOCK SPRING 9N	0104020024	1
20	针架下过线 6针	THREAD LOCK SPRING 6N	0104020025	
21	针架下过线 12针	THREAD LOCK SPRING 12N	0104020026	
22	针架下过线 15针	THREAD LOCK SPRING 15N	0104020027	
23	垫圈D9d5H4	WASHER		2
24	针架侧面支架	COVER BRACKET		2
25	面线架组件 9针 左置	UPPER THREAD LOCK 9N LEFT	0302050001	
26	面线架组件 9针 右置	UPPER THREAD LOCK 9N RIGHT	0302050002	1
27	面线架组件 6针 左置	UPPER THREAD LOCK 6N LEFT	0302050003	
28	面线架组件 6针 右置	UPPER THREAD LOCK 6N RIGHT	0302050004	
29	面线架组件 12针 左置	UPPER THREAD LOCK 12N LEFT	0302050005	
30	面线架组件 12针 右置	UPPER THREAD LOCK 12N RIGHT	0302050006	
31	面线架组件 15针 左置	UPPER THREAD LOCK 15N LEFT	0302050007	
32	面线架组件 15针 右置	UPPER THREAD LOCK 15N RIGHT	0302050008	
33	下毛刷组件 9N	BASEUPPER THREAD HOLDER 9N	0302020005	1
34	下毛刷组件 6N	BASEUPPER THREAD HOLDER 6N	0302020006	
35	下毛刷组件 12N	BASEUPPER THREAD HOLDER 12N	0302020007	
36	下毛刷组件 15N	BASEUPPER THREAD HOLDER 15N	0302020008	

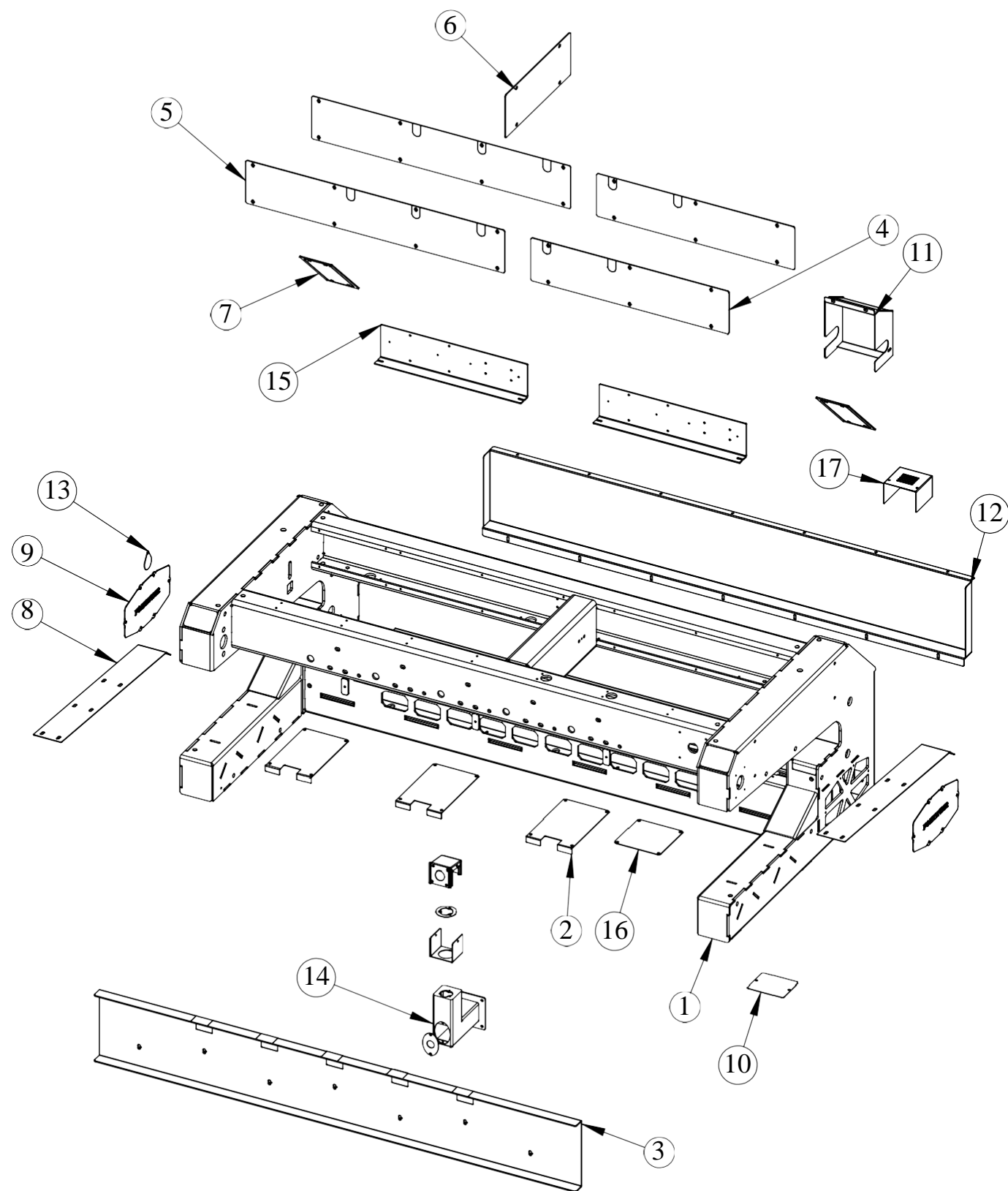
8 Gear Box 齿轮箱



8 Gear Box 齿轮箱

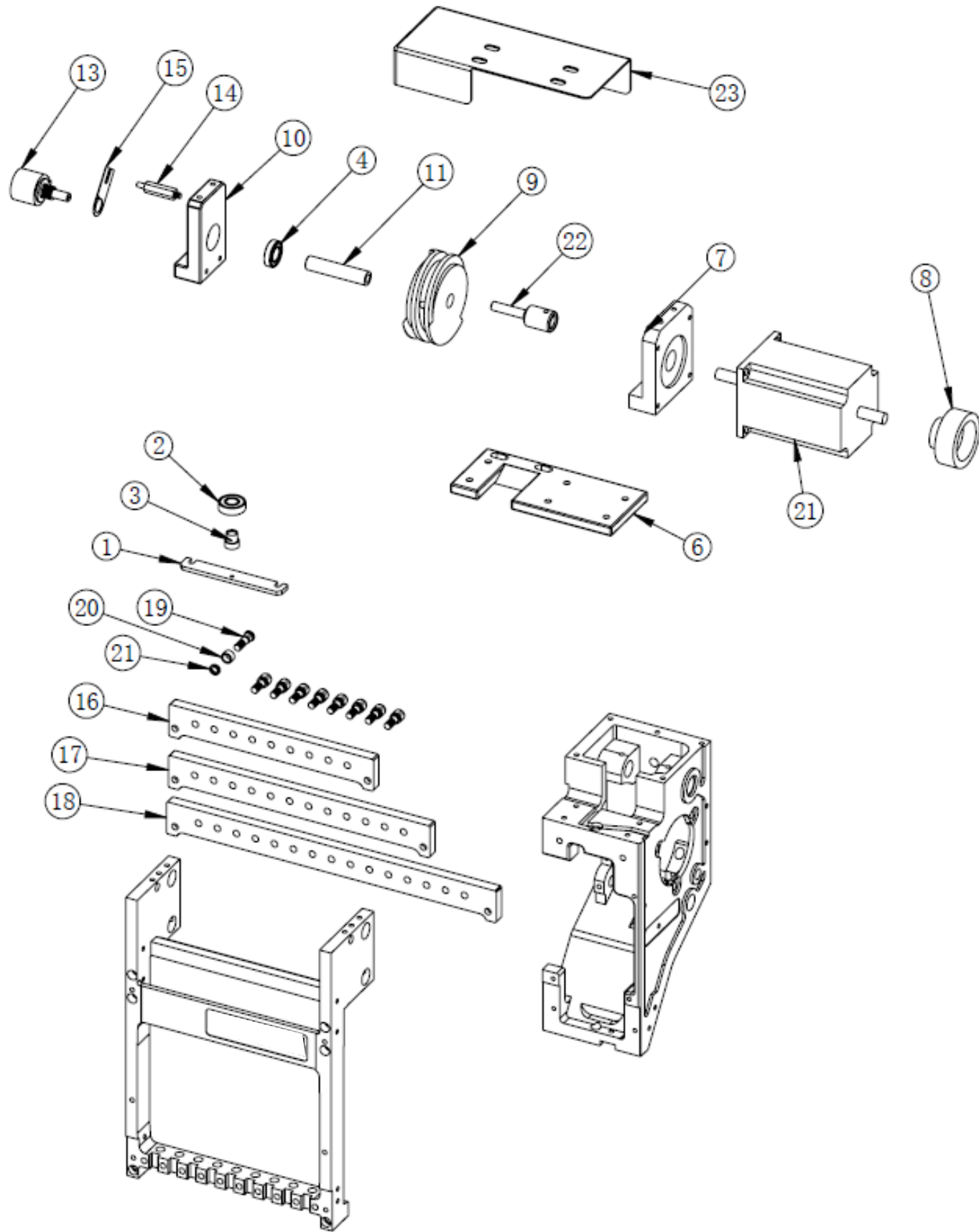


No.	Chinese Description	Description	Part No.	Qty
1	机架 (上架)	Frame	0109110001	1
2	皮带轮5MW25d15 34T	TIMING PULLEY	0106250005	2
3	主电机皮带轮5MW35d14 17T	TIMING PULLEY	0103250010	1
4	小张紧轮装配体			3
5	SM60-1330-D00A 伺服400瓦电机 3头机主电机	MAIN MOTOR	0206020005	1
6	万向轴承 UCFL202	UC BEARING 202	0202110001	2
7	6003轴承板	BEARING SUPPORT PLATE	0109250003	2
8	带轴承套轴承6003	Bearing 6003	0202010006	2
9	80SF3A100-330-1000Z- d14直流无刷伺服电机 2头机主电机	Main Motor	0206018023	1
10	主皮带 5M L1870 W25	TIMING BELT		1
11	3头机下轴	BOTTOM SHAFT	0109250002	1
12	3头机上轴	TOP SHAFT	0109250001	1
13	三头机刻度盘装配体			1
14	刻度盘目镜	DIAL OBSERVER	0105010062	1
15	轴承垫板T6	BEARING CONNECTING PLATE	0103250011	1
16	主轴零位感应板支架			1
17	主轴零位感应轮-d18	ZERO POSTION DISK	0103250013	1



No.	Chinese Description	Description	Part No.	Qty
1	机架 (上架)	Frame	0109110001	1
2	涡齿梭床后盖板A	BED BACK COVER	0109140001	3
3	轻帽机903 400梭床前盖板	FRONT TALBE SUPPORT COVER	0109140003	1
4	前梁右盖板	FRONT BRIDGE BACK COVER-R	0109260002	2
5	前梁左盖板	FRONT BRIDGE BACK COVER-L	0109260001	2
6	梁竖档盖板	MID BRIDGE BACK COVER	0109260005	1
7	墙板后盖板	BACK SIDE COVER	0109260006	2
8	墙板下盖板	UNDER COVER	0109260007	2
9	墙板侧盖板	SIDE COVER	0109260008	2
10	大铁盆孔盖D	HOLE COVER D	0108260033	1
11	Y步进电机罩-轻帽机装配体			1
12	轻帽机903 400后台板下盖板			1
13	齿轮箱盖扳手孔盖	LID:HANDLE	102250004	1
14	操作台组件装配体			1
15	电子板安装底板	PCB PLATE	0109260011	2
16	剪线口盖板	CUTTING HOLE COVER	0109140002	1
17	马头X电机罩 - 加长10	MOTOR COVER	0105150001	1

10 COLOR CHANGE 换色

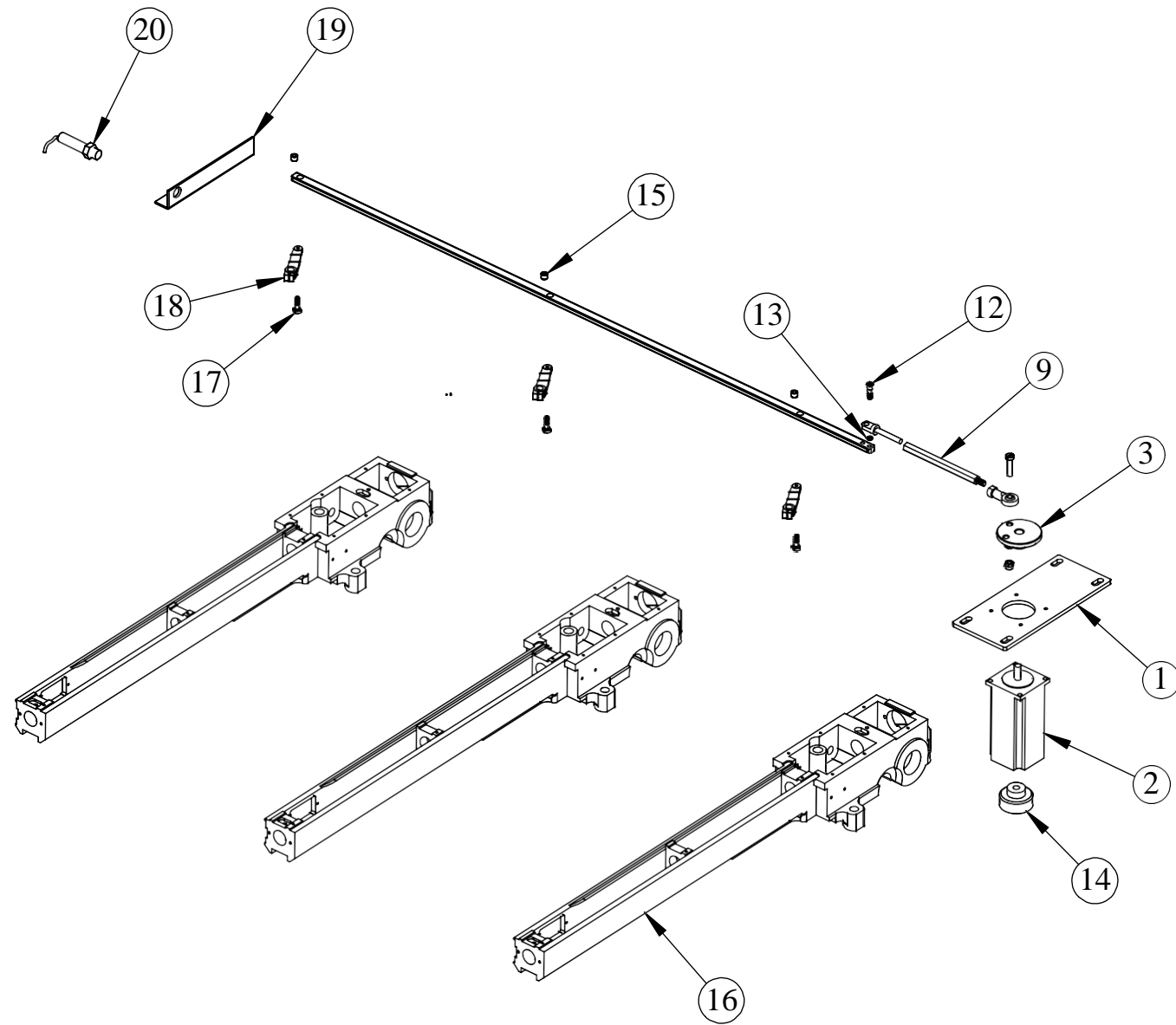


10 COLOR CHANGE 换色



No.	Chinese Description	Description	Part No.	Qty
1	D机头上盖板 - 配大换色用	Bearing Base	0104080008	1
2	轴承R-1980KK	Bearing	0202010007	1
3	自扣轴承销	Roller Pin	0102010003	1
4	轴承6800	Bearing	0202010011	1
6	换色凸轮底板	Color Change Base	0104080006	1
7	换色电机支座	Motor Base	0104080005	1
8	手柄	Handle	0106010007	1
9	帽绣换色凸轮	Cam	0104080002	1
10	换色凸轮支座	Bearing Plate	0104080004	1
11	换色凸轮铜衬套	Bushing	0104080003	1
13	电位器	Potentiometer	0207020001	1
14	电位器螺栓	Potentiometer Fixed Bolt	0106010005	1
15	电位器支撑板	Potentiometer Support	0106010020	1
16	9针换色滚珠板	Guide Plate for 9-Needle	0106010011	1
17	12针换色滚珠板	Guide Plate for 12-Needle	0106010010	1
18	15针换色滚珠板	Guide Plate for 15-Needle	0106010012	1
19	分段销	Pin	0106010014	9
20	换色滚珠	Collar	0106010013	9
21	垫片	Bushing	0106010015	9
21	57H2P082-1006BZ08 步进电机-少头换色	STEP MOTOR	0206015010	1
22	换色连接套	Connection Pin	0104080008	1
23	换色凸轮上盖板	Cover	0104080009	1
24	针杆架 9针	NEEDLE BAR CASE 9N	0102020001	1

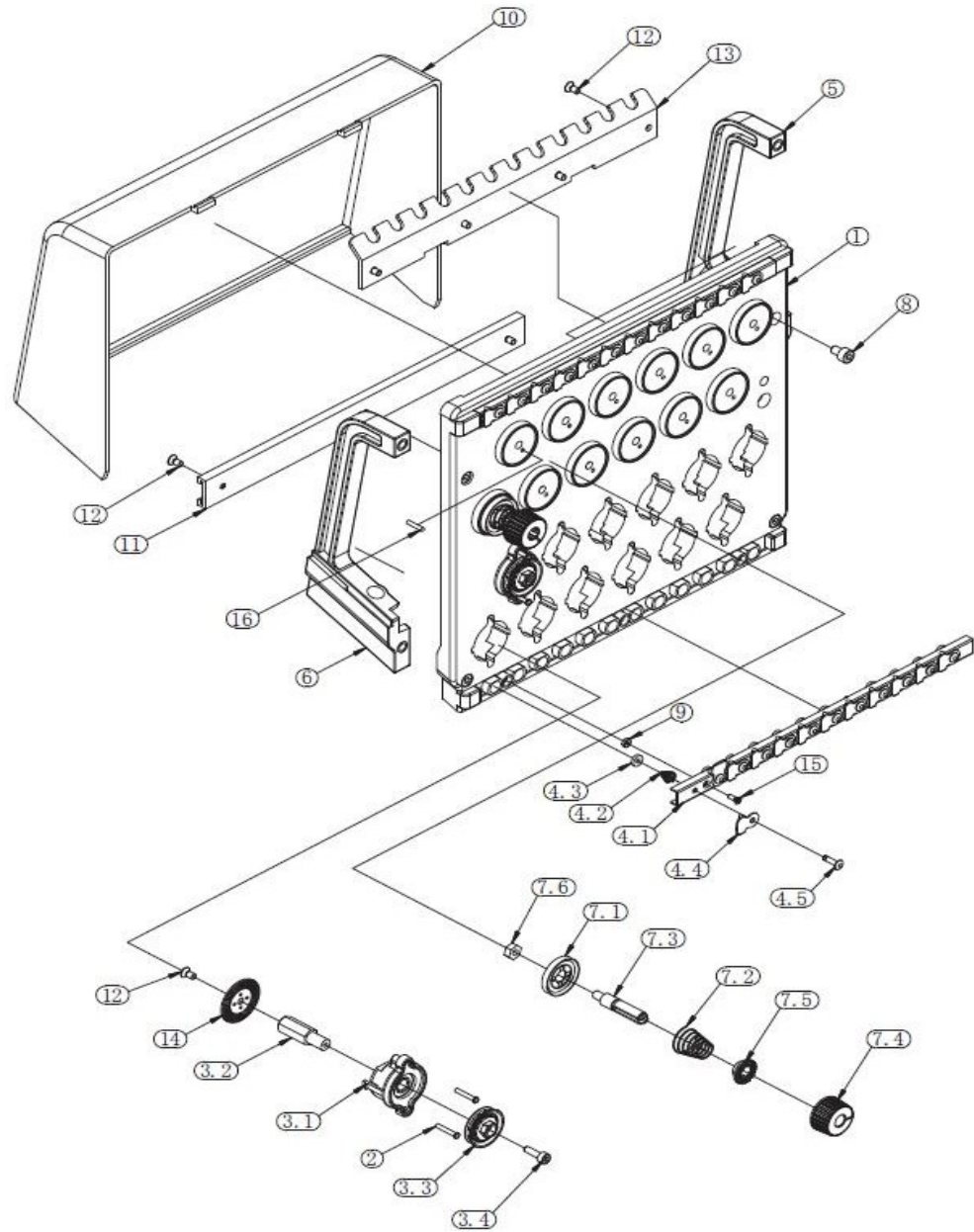
11 Trimming Drive System 剪线驱动



11 Trimming Drive System 剪线驱动

No.	Chinese Description	Description	Part No.	Qty
1	57电机安装法兰板-轻帽机用	CUTMOTOR PLATE	0109070001	1
2	57H2P112-2006BZ08 步进电机-剪线用	STPMOTOR	0206015011	1
3	偏轮组件-D8	Slider Wheel	0104040006	1
9	后罩盖支撑螺栓	Screw L113	0107010015	1
11	剪线驱动条-3头机用	Trimming Long Arm	0109070002	1
12	分段销	Pin	0106010014	1
13	垫片	Bushing	0106010015	1
14	塑料手柄	ADJUDSTMENT HANDLE	0105010017	1
15	剪线驱动条铜套	Bushing	0103070003	3
16	成衣绣涡齿梭床 - Y500	Rotary Hook Base	0108030027	3
17	剪线台阶销	Pin	0103070021	3
18	d8开口剪线连杆	Drive Arm	0103030013	3
19	剪线杆接近开关座	Sensor Base	0109070003	1
20	接近开关	Proximity Sensor	0207030006	1

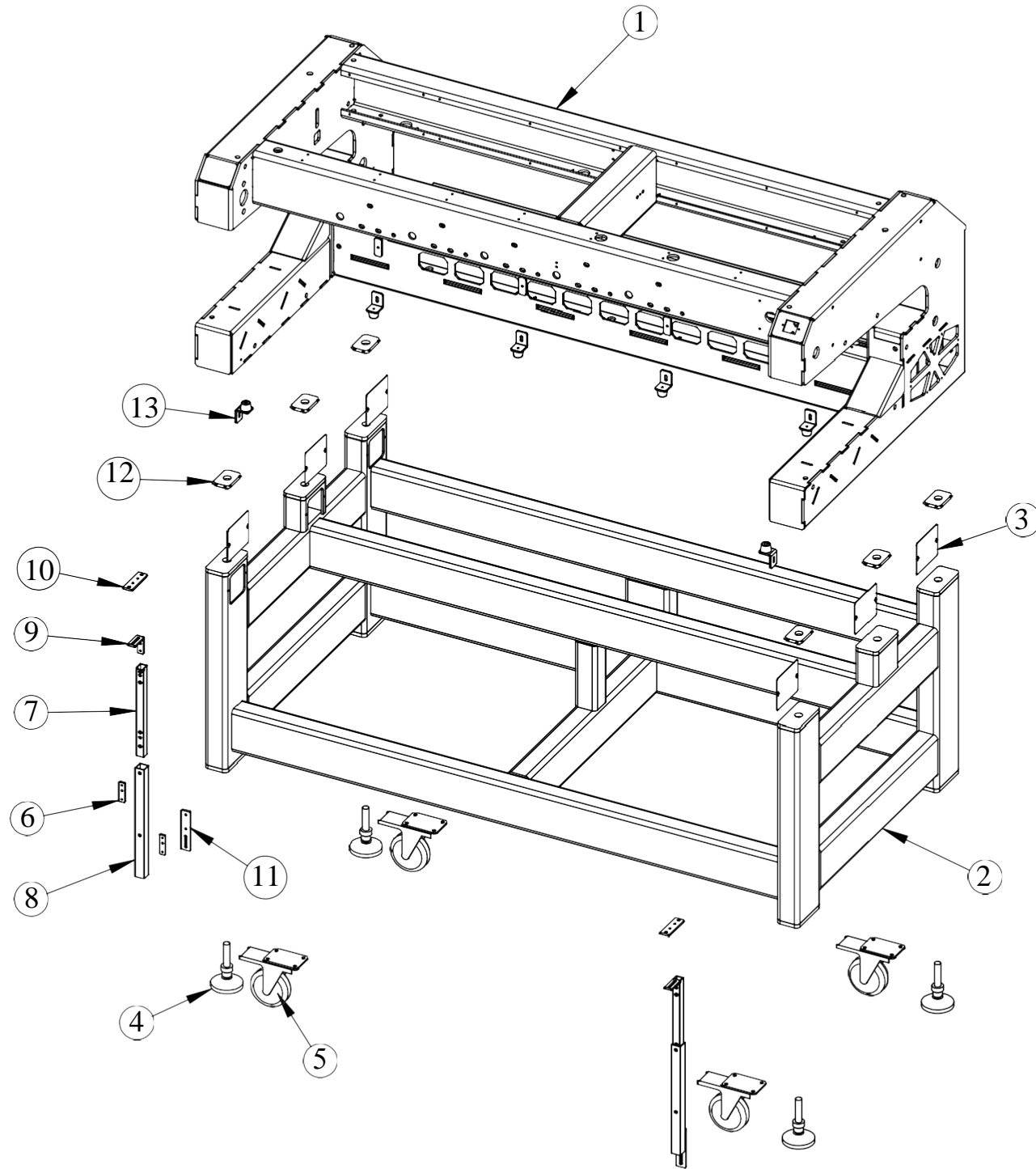
12 Thread Tension Base 夹线器组件



12 Thread Tension Base 夹线器组件

No.	Chinese Description	Description	Part No.	Qty
12.1	夹线器总成-余美真6针	Thread lead plate-06 For 06-Needle	305060005	1SET/H
	夹线器总成-余美真9针	Thread lead plate-06 For 09-Needle	305060006	
	夹线器总成-余美真12针	Thread lead plate-12 For 12-Needle	305060007	
	夹线器总成-余美真15针	Thread lead plate-15 For 15-Needle	305060008	
12.1	夹线器总成-集美6针	Thread lead plate-06 For 06-Needle	305060001	1SET/H
	夹线器总成-集美9针	Thread lead plate-09 For 09-Needle	305060002	
	夹线器总成-集美12针	Thread lead plate-12 For 12-Needle	305060003	
	夹线器总成-集美15针	Thread lead plate-15 For 15-Needle	305060004	
	夹线器总成-金龙鼎6针	Thread lead plate-06 For 06-Needle	305060005	
	夹线器总成-金龙鼎9针	Thread lead plate-09 For 09-Needle	305060006	
	夹线器总成-金龙鼎12针	Thread lead plate-12 For 12-Needle	305060007	
	夹线器总成-金龙鼎15针	Thread lead plate-15 For 15-Needle	305060008	
	夹线器总成-丹阳6针	Thread lead plate-06 For 06-Needle	305060009	
	夹线器总成-丹阳9针	Thread lead plate-09 For 09-Needle	305060010	
	夹线器总成-丹阳12针	Thread lead plate-12 For 12-Needle	305060011	
	夹线器总成-丹阳15针	Thread lead plate-15 For 15-Needle	305060012	

13 Stand 脚架

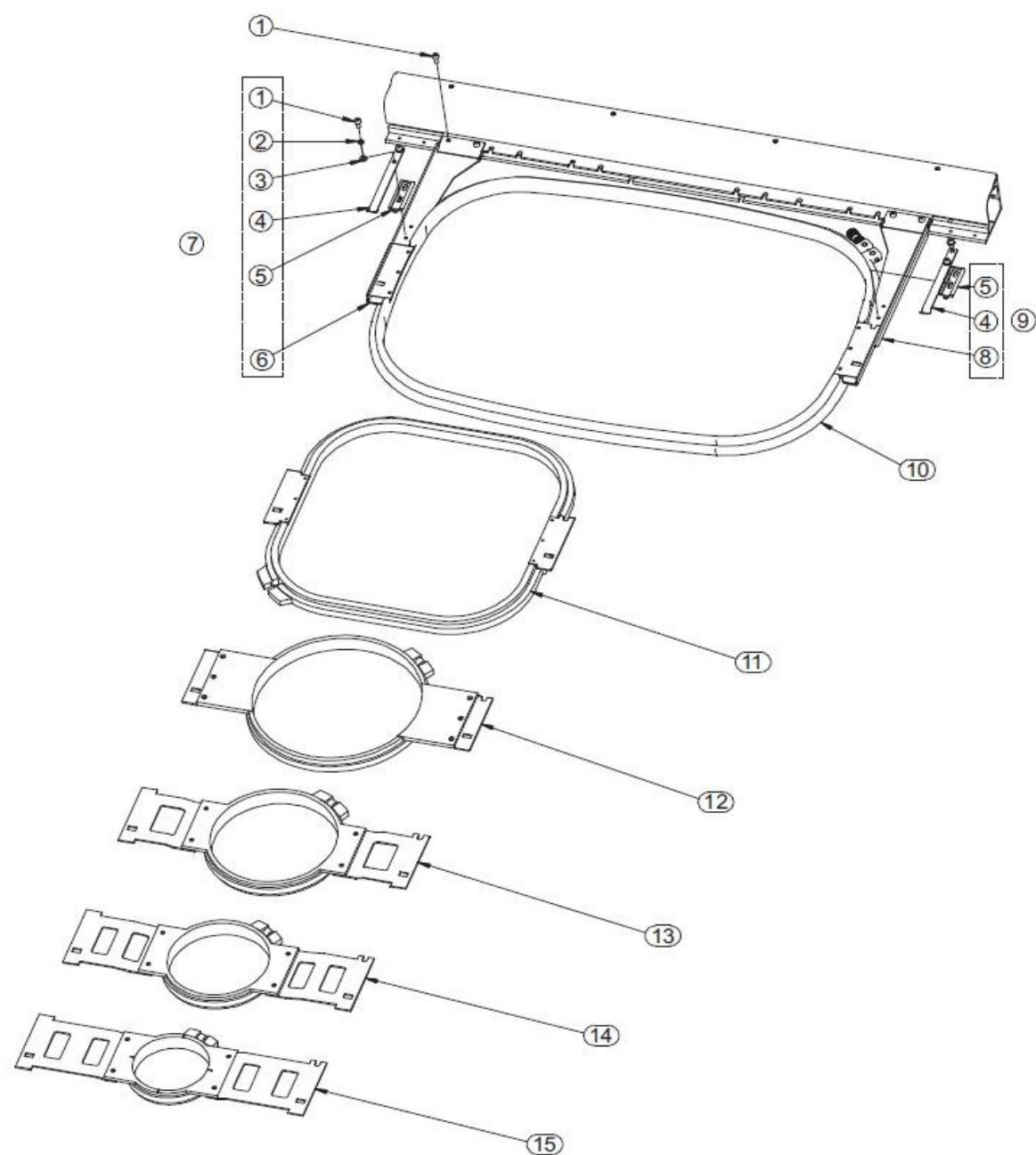


13 Stand 脚架



NO.	Chinese Description	Description	Part No.	Qty
1	机架 (上架)	Frame	0109110001	1
2	机架下铁架	Stand	0109110002	1
3	大铁盆孔盖D	HOLE COVER D	0108260033	6
4	机脚调节垫螺丝M16H120			4
5	重型脚轮D100 4寸			4
6	螺纹衬板			4
7	前台板支撑管 (上) - 高速帽机用			2
8	前台板支撑管 (下) - 高速帽机用			2
9	上调节板			2
10	台板支撑固定块	Support Board	0103140016	2
11	下调节板			2
12	橡胶垫			6
13	台板橡胶垫装配体 (小)			6

14 Embroidery Frame 花架

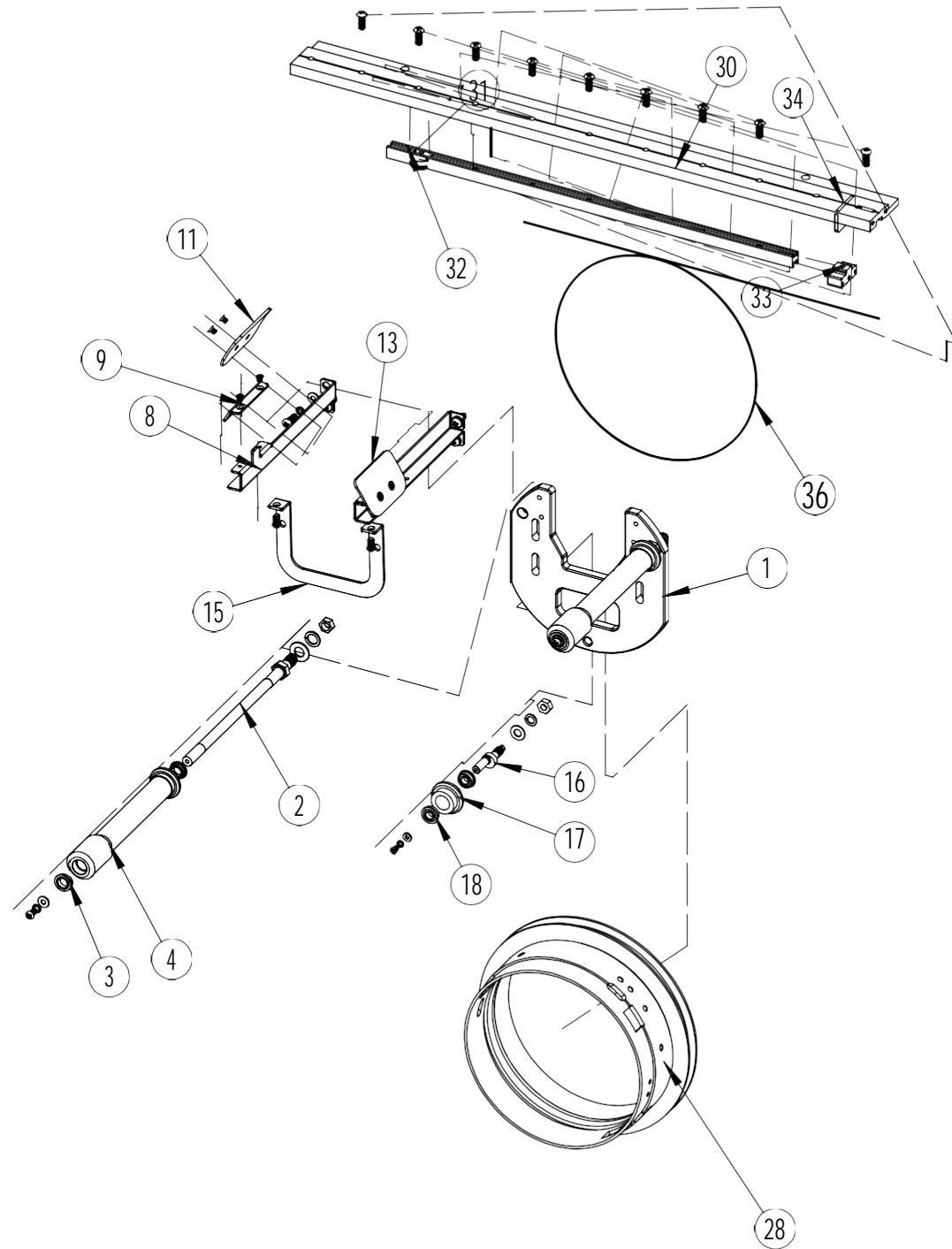


14 Embroidery Frame 花架

BAI EMBROIDERY MACHINE

No.	Chinese Description	Description	Part No.	Qty
16	台州绿色花架组件(含5个)		305230001	1
	台州灰色花架组件(含5个)		305230002	
16.1	内六角头柱头螺钉M4*10	Hex socket head screw M4*10	201010410-1	4
16.2	弹垫M4	Spring washer M4	201220410-1	4
16.3	垫圈M4	Washer M4	201210410-2	4
16.4	左扶手组件	Frame bracket set-L	305200001	1
16.5	右扶手组件	Frame bracket set-R	305200002	1
16.6	花架540*360	Rectangle frame-540x360	305230006	1
16.7	花架290*290	Rectangle frame-290x290	305230005	1
16.8	花架200	Round frame-200	305230004	1
16.9	花架150	Round frame-150	305230003	1
17	花架120	Round frame-120	305230002	1
17.1	花架90	Round frame-90	305230001	1
17.2	绣框连接板		105190001	1

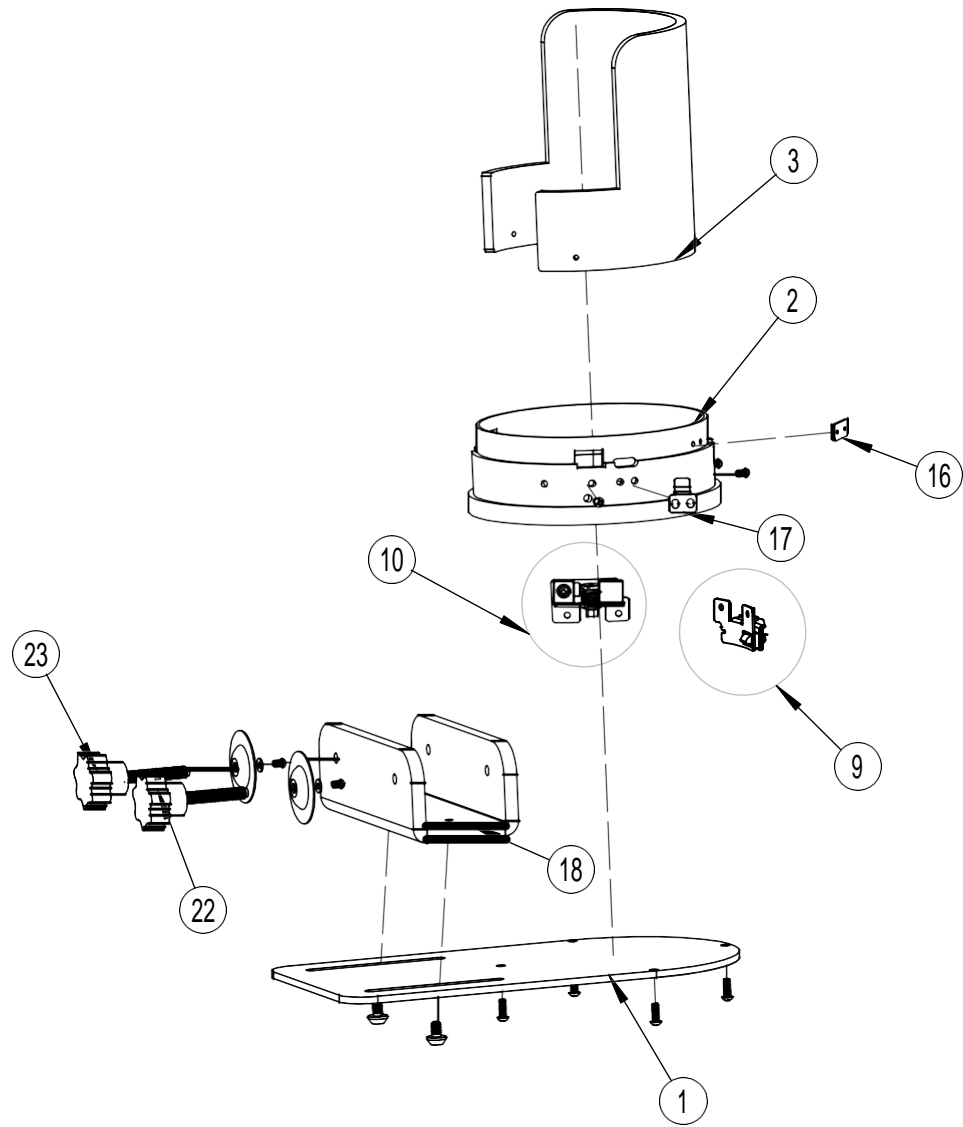
15-1 Cap Frame parts 帽驱动组件



15-1 Cap Frame parts 帽驱动组件

No.	Chinese Description	Description	Part No.	Qty
1	帽驱动底板	Cap frame main support	0103240021	1
2	导向轮轴	Shaft	0103240024	2
3	轴承MFL2622	Bearing MFL2622	0202010037	4
4	尼龙棒	Nylon rod	0103240023	2
8	导向支撑左	Support-L	0103240025	1
9	导向板调节座	Support plate	0103240028	1
11	帽导向板	Minor support plate	0103240029	1
12	导向支撑右	Support-R	0103240026	1
15	左右支撑加强版	U stand	0103240036	1
16	偏心销	Pin shaft	0103240004	1
17	尼龙滚轮	Trolley	0103240031	1
18	轴承MFL2822	Bearing MFL2822	0202010036	2
28	帽圈	Cap tube	0103240022	1
30	马头机驱动板L490	Cap frame support plate	0105150034	1
31	驱动滑轮M4XD17T10	Nylon wheel	0103240042	1
32	帽驱动板导轨	Plastic bar	0103240044	1
33	钢丝张紧块	Adjustment slider	0103240039	1
34	驱动板调节座 (28X18X2.5)	Adjustment slider presser plate	0103240041	1
36	钢丝	Steel wire	0204060001	1

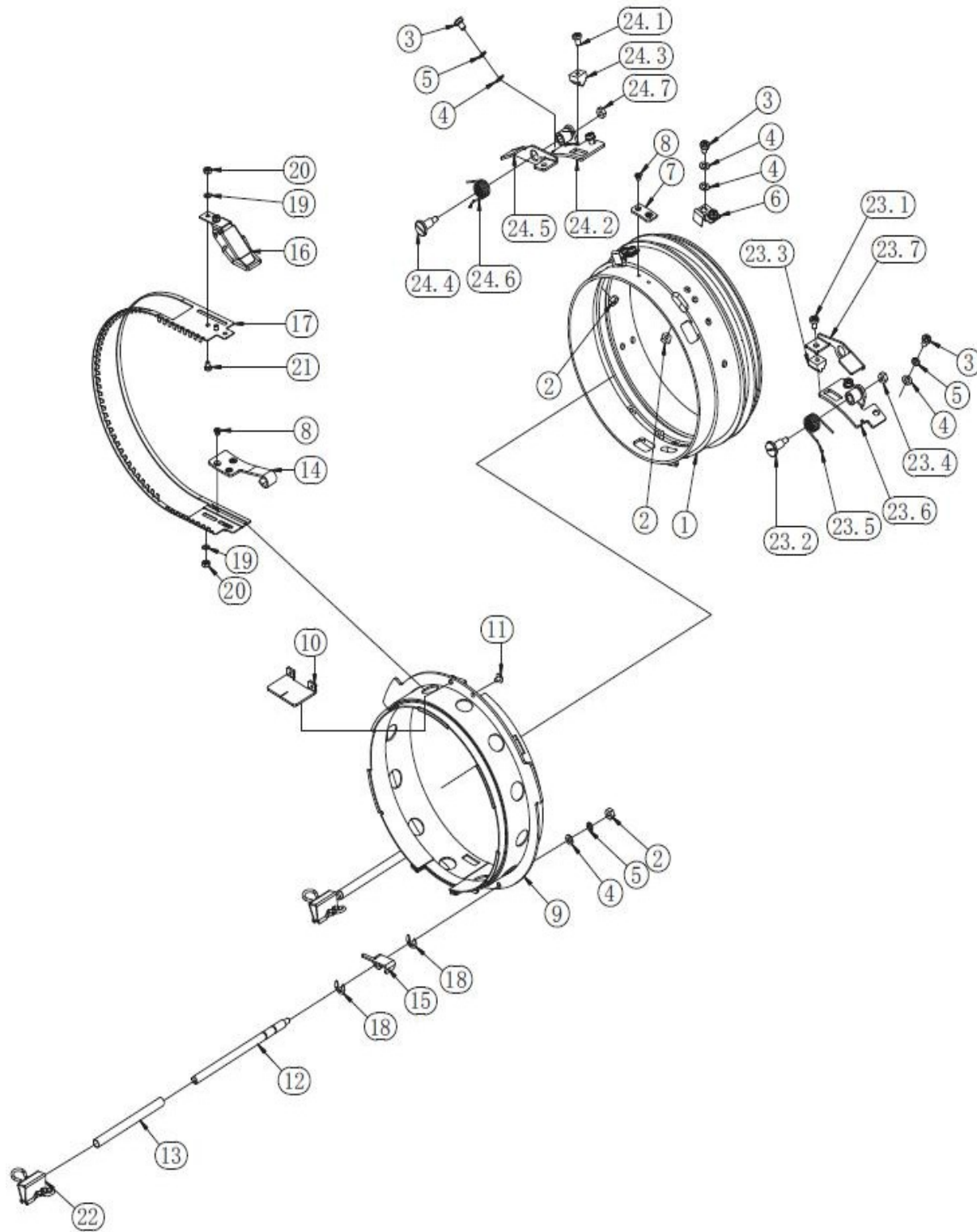
15-2 Cap Frame parts 帽座组件



15-2 Cap Frame parts 帽座组件

No.	Chinese Description	Description	Part No.	Qty
1	帽座底板	Cap frame main support	0103240001	1
2	帽座帽圈	Cap tube	0103240005	1
3	帽檐	Brim of a hat	0103240006	1
9	帽圈卡扣组件A	Cap casing A	0304240006	1
10	帽圈卡扣组件B	Clamp base B	0304240007	2
16	帽圈固定块	Positioning block	0103240010	1
17	帽圈弹簧片	Shrapnel	0103240024	3
18	U型板	U shape plate	0103240003	1
22	帽座手柄A	Handle A	0103240011	1
23	帽座手柄B	Handle B	0103240012	1

16 Cap Stand Frame 帽架



16

Cap Stand Frame 帽架

BAI EMBROIDERY MACHINE

No.	Chinese Description	Description	Part No.	Qty
1	帽管	Cap tube		
2	螺母M4	Nut M4		
3	十字槽扁圆头螺钉	Truss head screws M4*6	201160406-3	
4	垫圈M4	Washer M4	201210410-2	
5	弹垫M4	Spring washer M4		
6	弹片	Shrapnel		
7	定位块	Positioning block		
8	十字槽沉头螺钉M3*4	Counterbore screws M3*4	201130304-2	
9	夹	Clamp		
10	定位块	Positioning block		
11	六角头螺钉M3*4	Hex head cap screws M3*4	201460304-1	
12	帽架支柱	Hat rack strut		
13	橡胶衬套	Rubber bushing		
14	锁扣	Tie head cap		
15	锁钩	Lock hook		
16	锁	Lock		
17	夹帽片	Cap strapping rod		
18	E型圈	E-Ring-6		
19	垫圈M4	Washer M4	201210410-2	
20	螺母M3	Nut M3	201350322	
21	六角头螺钉M3*4	Hex head cap screws M3*4	201460304-1	
22	夹子	Clip		
23	帽盖组件A	Cap casing A		
23.1	十字槽扁圆头螺钉	Truss head screws M4*6	201160406-3	
23.2	带卡盘螺丝	Screw with chucker		
23.3	帽盖A	Cap casing		
23.4	螺母M4	Nut M4	201350422	
23.5	收宿弹簧	Collet spring		
23.6	夹座	Clamp base		
23.7	夹座A	Clamp base A		
24	夹座B	Clamp base B		
24.1	十字槽扁圆头螺钉	Truss head screws M4*6	201160406-3	
24.2	夹座B	Clamp base B		
24.3	帽盖组件	Cap casing		
24.4	带卡盘螺丝	Screw with chucker		
24.5	帽盖B	Cap casingB		
24.6	收宿弹簧B	Collet spring B		
24.7	螺母M4	Nut M4	201350422	